

Find.

Enhance.

Deliver.



## Tomingley Gold Mine

# COMMUNITY UPDATE

ISSUE 29 / DECEMBER 2022

ASX : ALK

### Site news

#### **Construction of second residue storage facility**

There's a major construction project happening on site right now – the construction of our second residue storage facility (RSF2). We broke ground on the project in May, and after some delays due to wet weather, construction is well underway and expected to be completed in May next year.

RSF2 will safely store processing residue for the next phase of underground development at Wyoming One and Caloma, as well as mining of the San Antonio and Roswell resources.

The structure is being built to the latest technical specifications according to ANCOLD guidelines and Dams Safety NSW Regulations. It will have a final footprint of 65ha, which is similar to the footprint of RSF1.



RSF2 under construction

#### **Tomingley Gold Extension Project**

We believe we are close to receiving a determination on the Tomingley Gold Extension Project, which seeks to extend our mining operations to the San Antonio and Roswell deposits south of Tomingley.

The final response to documentation required by the Department of Planning and Environment (DPE) was submitted in the first week of December.

This information is now being reviewed by DPE and we hope to receive approval very soon.

#### **Application to establish new access ramp (MOD7)**

An application to modify our development consent (Modification 7 or MOD7) was submitted to DPE and exhibited in November. MOD7 involves establishing a new northern access ramp to the Wyoming One open cut within our current and approved operational footprint.

The realignment will result in safer long-term access to the Wyoming One open cut and the underground portal, as it provides greater clearance from a section of localised and minor geotechnical movement located within the current open cut.

We've responded to comments from the Narromine Shire Council, the NSW Environment Protection Authority (EPA) and the NSW Resources Regulator. This information is also being reviewed and we hope to receive approval very soon.

## Second ventilation shaft for exploration drive

We continue to develop the long underground exploration drive that extends from our Wyoming underground mine towards the Roswell resource.

We have completed 2,231m of the drive, which is approaching Roswell, and currently turning out for the bottom of a second ventilation shaft.

We received approval for a second ventilation rise in late November. It will be located north of Kyalite Road and east of the Newell Highway.

This rise will be an exhaust rise, while the current ventilation rise located north of McNivens Lane will be converted from an exhaust rise to an air intake.

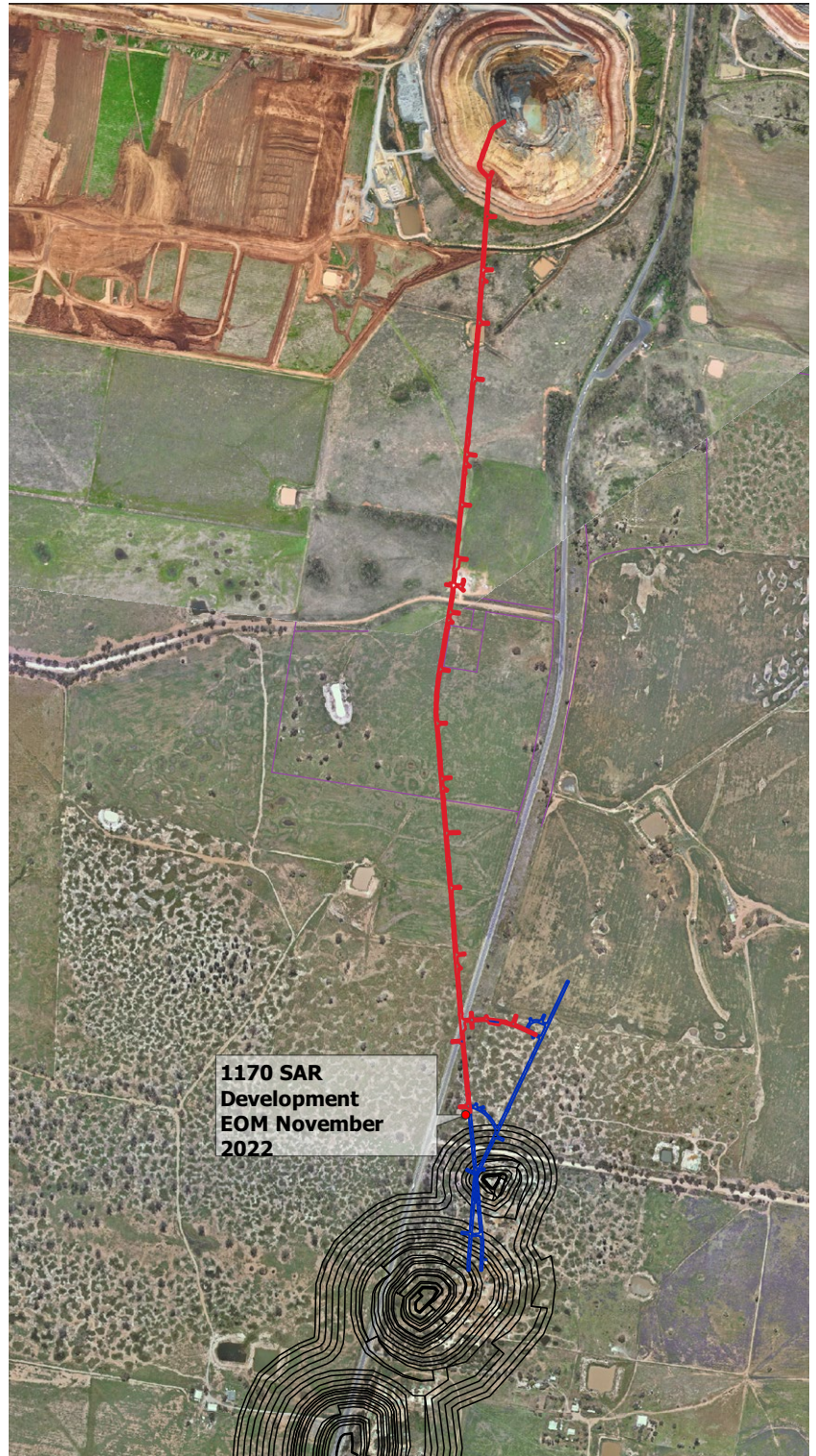
The second ventilation rise is needed to allow more exploration equipment to operate underground than originally planned.

In the future, pending TGEF approvals, this vent rise could also be used during underground mining of Roswell and also provides an emergency egress from the Roswell underground development.

Pre-construction works for the second ventilation rise are getting underway, including preliminary works such as forming of all-weather vehicle access tracks.

Full construction is expected to be completed in April 2023.

The exploration drive will permit underground drilling of the McLeans prospect. Once the drive reaches Roswell, we intend to commence diamond drilling to infill the Roswell resource.



Progress of exploration drive (red)

## Exploration update

### *Low-impact passive seismic surveys*

Alkane's exploration team continues to build geological understanding of the gold prospects south of Tomingley using the latest technologies and field techniques.

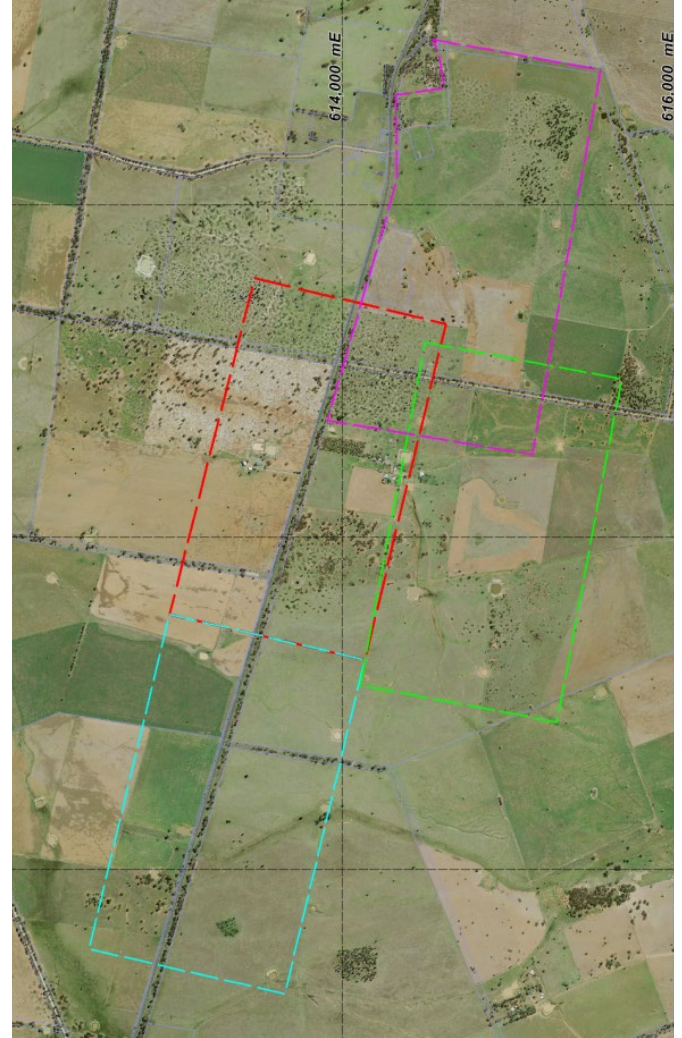
For a month spanning November and December, the team trialled a passive seismic survey technique at a number of prospects. It involved embedding 40 satellite-linked geodes into the ground over the areas of interest. The geodes were spaced 300m apart in a 5X8 grid (an area of 1200m X 2100m) and left for up to six days to "listen" to the ground vibrations generated by road traffic and the nearby mine.

The geodes measured the seismic velocity (speed) of the vibrations and beamed this information via satellite to specialist software systems. The data recorded over several days was used to build a 3D picture of seismic velocity (which can be correlated with rock density) to a depth of approximately 600m.

These passive seismic surveys were carried out at Alkane's McLeans, Plains and El Paso prospects, as well as the Roswell and San Antonio deposits. We hope to use the obtained 3D information to enhance our understanding of rock sequences and structure – and help target gold exploration.



*One of the satellite-linked geodes*



*Areas where the passive seismic surveys were conducted*

### *Drill program*

Further exploration drilling is also planned at the McLeans prospect, which lies 2km south of Tomingley, 600m north of the Roswell deposit.

A program of surface RC drilling and underground diamond core drilling (from the exploration drive) will help determine whether McLeans is a candidate for adding to the Tomingley mine plan. Results so far have been encouraging.

We also hope to carry out a small aircore drilling program at the Plains and El Paso prospects in January.

## Archaeological recording of old McPhail area

During the first week of December, a team of archaeologists from OzArk Environment & Heritage (OzArk) undertook test excavations of the former village of McPhail and photographic archival recording of the Rosewood Homestead and Trotting Stud.

This follows the recommendations of the Historic Heritage Assessment Report, prepared by OzArk for the Tomingley Gold Extension Project Environmental Impact Assessment (EIS). Since both these areas will be disturbed by the project, the purpose of this work is to determine whether there are any hidden items of historical note for preservation and archival documentation.

### McPhail

The former village of McPhail would be disturbed by the realigned Newell Highway. It once lay to the west of the McPhail Mine (near the highway, south of the current

operation) and included a hotel, McGaw's store, church and school. Today, the only remaining evidence at the surface is scattered brick, glass and ceramics.

The OzArk team excavated a number of test trenches within areas containing the former Commercial Hotel, a group of potential commercial businesses that once fronted the current Newell Highway, and potential dwellings in the south of the village. Any artefacts retrieved from the test trenches will be cleaned, photographed, analysed and recorded.

### Rosewood

Rosewood Homestead and Trotting Stud comprises a range of agricultural buildings, including a homestead built in 1915 located at the eastern rim of the proposed SAR open cut. The OzArk team undertook a photographic recording of the structures according to procedures set out by the NSW Heritage Office.



OzArk excavated a number of test trenches at the former village of McPhail.

## Sustainability Report

While Alkane has always been committed to operating in a sustainable fashion, in our 2022 Annual Report we enhanced the way we report and communicate our approach to sustainability – often referred to as “ESG”, which stands for Environment, Social & Governance.

We began by capturing our approach in an ESG Mission Statement, which aligns with our company values. This Mission Statement represents our pledge to all stakeholders – including our host communities.

Our 2022 Sustainability Report is available on our website as part of the 2022 Annual Report (pages 27-56). It summarises the Alkane Group’s sustainability performance in FY22 – the measures we have in place, the actions we have taken and the outcomes we have achieved. The report has been structured around four sustainability pillars spanning ESG: Governance, Our People, Communities, and Environment.

We encourage those who are interested in learning more about sustainability at Alkane and Tomingley Gold Mine to [download the report from our website](#).

Company Values	ESG Mission Statement
 <p><b>Integrity</b> We do what's right in our actions and relationships.</p>	<ul style="list-style-type: none"> <li>• Ensure our choices and behaviours align with our values.</li> <li>• Maintain good environmental governance.</li> <li>• Be responsive to the needs of all stakeholders.</li> </ul>
 <p><b>Respect</b> We treat people and the environment with care.</p>	<ul style="list-style-type: none"> <li>• Minimise impacts from our operations.</li> <li>• Stay positively engaged with host communities.</li> <li>• Value the safety and wellbeing of our workforce.</li> </ul>
 <p><b>Transparency</b> We are proactive in communicating our intent and outcomes.</p>	<ul style="list-style-type: none"> <li>• Expand sustainability reporting and disclosures.</li> <li>• Communicate openly with stakeholders about our activities.</li> </ul>
 <p><b>Performance</b> We plan and execute to deliver strong business results.</p>	<ul style="list-style-type: none"> <li>• Actively seek sustainable solutions that have a strong business case.</li> </ul>

## Four Sustainability Pillars

Governance	Our People	Communities	Environment
<p>Adhering to a corporate governance framework</p> <p>Operating with integrity, respect and transparency</p> <p>Managing risks across operations, finance and sustainability</p>	<p>Ensuring a rewarding and equal-opportunity workplace</p> <p>Valuing the safety and wellbeing of our workforce</p>	<p>Responding to the needs of stakeholders</p> <p>Working with host communities to build resilience</p> <p>Respecting Aboriginal and Torres Strait Islander culture and traditions</p>	<p>Managing water, emissions and waste responsibly</p> <p>Rehabilitating the land we disturb</p> <p>Enhancing biodiversity and land capability to offset our impact</p>

## Community

### Gold medal for Tomingley student in schools' lawn bowls comp

Tomingley student, Cooper Dart, won a gold medal at the School Sports Australia Bowls Championships, held in Melbourne in September.

Cooper represented the NSW Combined High Schools (CHS) lawn bowls team in a round robin tournament against Victoria.

He is a year 9 student at Peak Hill Central School and member of the West Dubbo Bowling Club.

Tomingley Gold Mine was delighted to assist with funds towards Cooper's travel and uniform costs and we congratulate him on the team's success.



David Pritchard, Tomingley Environment and Community Manager, presents Cooper with a Certificate of Congratulations on his performance.

### Subscribe to our eNews

Sign up for all Alkane and Tomingley news at [alkane.com.au/subscribe](http://alkane.com.au/subscribe)

### Community Fund

Alkane continues to support community projects and events through the Tomingley Community Fund. The next round of funding will open for submissions in February 2023. Funding is awarded on a submission basis, with final approval by the Narromine Shire Council.

The second round of 2022 funding was awarded in October. Of the nine received applications, the following seven applications were successful:

#### Community Fund Recipients

- Narromine Clay Target Club**  
 \$2,500 toward upgrading the existing solar panel system
- Narromine Community Skills Project Inc**  
 \$4,350 toward the Narromine Community Christmas Party and Venetian Carnival
- Narromine Gorillas Rugby Union Football Club**  
 \$5,000 towards education, training and equipment
- Narromine Hospital Auxiliary**  
 \$5,000 towards a Concealment Transport Trolley
- Narromine Soccer Club**  
 \$5,000 towards fitting out new canteen and equipment sheds at Dundas Oval
- Narromine Agricultural Show Society**  
 \$5,000 towards hosting 2024 Zone Final – Young Woman of the Year
- Tomingley Recreation Ground**  
 \$15,000 towards new infrastructure for secretary office / meeting room, jockeys' room and stipends including showers and toilets

## Agriculture and Land Management

Alkane's agriculture partner, Toongi Pastoral Company (TPC), continues to manage the residual farming land we own around Tomingley. We've committed to improving the long-term livestock carrying capacity of approximately 1450ha using sustainable farming methods.

One of the first orders of business has been evaluating the water management and infrastructure requirements of the amalgamated properties. The properties currently have no irrigation or piped troughing, with little groundwater and only two natural watercourses (Gundong and Bulldog Creeks). In addition to developing an infrastructure plan to support future livestock requirements, the TPC team plans to put on gumboots and evaluate all the dams over summer.

The consolidated property currently supports around 2000 ewes, 30 rams and some lambs. Half the ewes are in a spring lambing cycle, with the other half to lamb in autumn. The lambs born during August and September are now ready to be weaned.

In the first half of December, approximately 140ha of wheat and seed oats were harvested. Crops on the higher ground have yielded relatively well.

However, the 2022 cropping season was impacted by the excessive wet weather, which led to poor germination, waterlogging and an inability to sow all the prepared paddocks. A silver lining, however, is the vast quantities of organic matter applied to the soil, and the fact the land had an extra chance to rest.

Alkane takes an integrated approach to mining and land management, and our relationship with TPC is unique. We originally founded TPC in 2016 as a sustainable farming enterprise to manage the residual land associated with the polymetallic Dubbo Project (now owned by our former subsidiary, ASM). TPC is tasked with developing and enacting our long-term Tomingley land management and rehabilitation plan to ensure the unimpacted agricultural lands will be highly productive post-mining.



*Harvesting wheat near Tomingley*