

Find.
Enhance.
Deliver.



Tomingley Gold Operations COMMUNITY UPDATE

ISSUE 27 / FEB 2022

ASX : ALK

Tomingley Gold Extension Project *Public exhibition of the EIS*

We continue to progress approval of the Tomingley Gold Extension Project (TGEP), which seeks to extend our mining operations to the San Antonio and Roswell deposits south of TGO.

The Environmental Impact Statement (EIS) has now been submitted to the NSW Department of Planning and Environment (DPE).

The EIS will be on public exhibition between **28 February and 28 March 2022**. You can view the EIS online at the DPE Major Projects website (see box) or in person at the Narromine and Parkes Shire Council offices.

During the exhibition period, anyone can make a written submission – whether that be in support, opposition or simply to make a comment.

Submissions can be made online or in writing and posted to DPE at Locked Bag 5022, Parramatta NSW 2124. We have included a blank submission form for anyone to use at the end of this newsletter.

Ongoing consultation with the local community was very important in the preparation of the EIS, and we once again thank everyone who took the time to be involved during this process.

Make a Submission on the EIS!

Now it's your turn to have a say. The TGEP EIS is on public exhibition until 28 March. If you support the project, or disagree with certain aspects, or just want to make a comment, it only takes a few minutes.

Use the link below or the form at the end of this newsletter. We welcome community feedback.

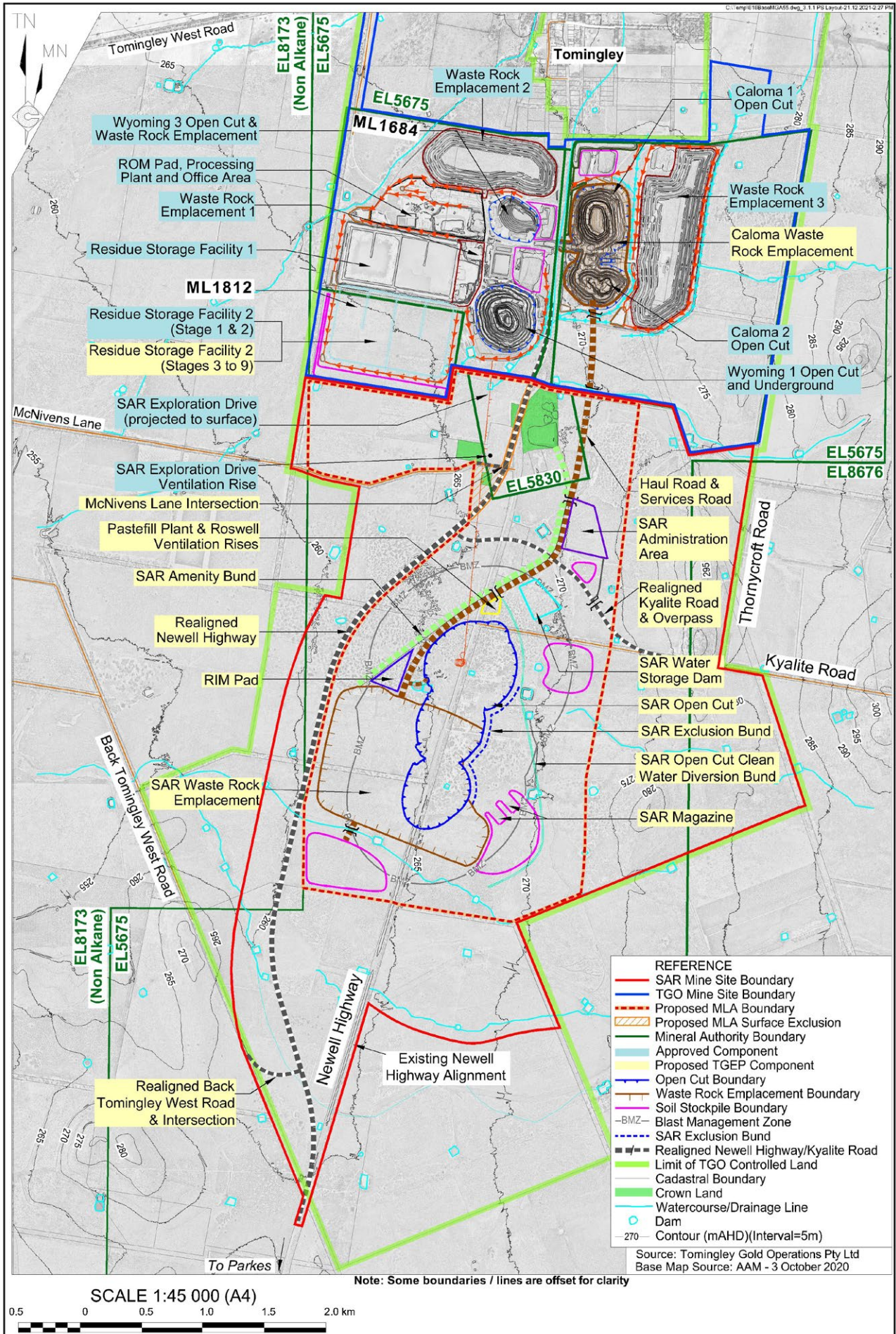
planningportal.nsw.gov.au/major-projects/projects/tomingley-gold-extension-project



The Tomingley Gold Extension Project will extend the life of the TGO processing plant.

Final TGEF design

In finalising the EIS for submission, we've also made minor refinements to the detailed design and scheduling of the project. There are no major changes to the layout, which is presented below. There's a strong chance the design will continue to be refined as we progress towards approval.



Environmental Assessments

The EIS is based upon a series of environmental impact assessments in key areas, completed by a large team of specialist consultants. We described the near-final results of these assessments in our *October 2021 newsletter*; however, in finalising the EIS there have been minor updates in some areas.

Below is a brief overview of the final results in each area, and a description of some of the actions that will be undertaken if we receive project approval.

Traffic and transport

The proposed realigned section of the Newell Highway will include:

- Upgraded safety infrastructure, including wire rope barriers and separation of travel lanes
- Improved flood immunity
- Upgraded intersections with Back Tomingley West Road, Kyalite Road and McNivens Lane, including dedicated right-turn lanes.

Visual amenity

We've designed the project to preserve visual amenity to the greatest extent possible. The main visible landform will be the waste rock emplacement, which has been designed using geomorphic principles to mimic a "natural" landform. As we did at TGO, where the waste rock emplacement will be visible from the highway, we'll start each lift by building the section facing the highway first, providing a visual shield for ongoing mining activities.

Noise

Noise emissions during the day are expected to comply with EPA criteria. However, during the evening (6pm to 10pm) and night (10pm to 7am), exceedances of up to 2 decibels are predicted. These are classified by the NSW Government as "negligible" exceedances.

We have previously installed noise mitigation at almost all residences that would be affected. A similar program would be considered for the limited number of residences newly impacted. We will also install additional real-time noise monitors to alert staff when noise levels are

becoming high, allowing them to adjust onsite activities.

Air quality

No exceedances of the air quality assessment criteria are predicted, with the exception of PM10 (very fine dust less than 10µm in diameter) on a few days per year. While the assessment likely overstates the impacts, we will install additional real-time dust monitors to alert staff when dust levels are becoming high. Again, this will allow onsite activities to be adjusted to limit dust emissions.

Surface water

The project has been designed to ensure all surface water flows (from rain etc) are diverted around the mine site. All potentially mine-affected water would be retained onsite, ensuring no downstream impacts on water quality, as for our current operation.

These minor changes to surface water flow paths would mean additional overland flows in some areas and reduced flows in others. We've consulted with landholders to understand their expectations, including working with those affected to redivert surface water as required.

Groundwater

The groundwater assessment determined that no significant groundwater impacts are expected. In particular:

- The TGEP development would not impact shallow alluvial aquifers.
- Water within the deeper fractured rock aquifer, typically 60m to 80m below surface, is saline and unsuitable for agricultural uses. Groundwater in this aquifer would be impacted, with drawdown expected to extend to the northern end of Tomingley village 200 years post-mining. No registered stock, domestic or water supply bores would be impacted.
- Additional monitoring bores would be installed to allow for a more-accurate interpretation of potential groundwater impacts.
- Groundwater inflows will continue to be monitored, and licences will be acquired for all inflows, including post-mining.

Soils, agriculture and land capability

We have committed to improving the overall land and soil capability of our agricultural land that would not be disturbed by mining.

This would be achieved through targeted soil amelioration and relocating of higher-quality soils within the disturbance footprint. In addition, through careful agricultural land management practices, we are aiming to increase the agricultural productivity of that land by 2035, resulting in a net gain of agricultural productivity across the life of the project – and beyond.

We intend to adopt good land management practices, including ongoing pest and weed management that ensure our operations have minimal impact on surrounding land.

Biodiversity

Approximately 78ha of native vegetation would be disturbed by the project, with no significant habitat to be cleared. While the biodiversity impacts would be small, we will offset those that would occur in accordance with the NSW Government's requirements.

In the long term, the final rehabilitated landform would further strengthen the existing and approved biodiversity offset and management program.

Aboriginal heritage

A total of 39 sites of Aboriginal heritage significance have been identified across the development site. The project would result in disturbance of 12 of these. Consultation with the Aboriginal community in relation to management of the proposed disturbance is ongoing.

Historic (post-European settlement) heritage

The heritage assessment identified three sites of potential historic heritage, two of which would be impacted.

Village of McPhail – The former village of McPhail is located to the west of the McPhail Mine. The only remaining evidence at the surface is scattered brick, glass and ceramics in places. We propose to undertake test excavation to determine whether there are any buried items of historical note for preservation and

archival documentation.

“Rosewood” Homestead and Trotting Stud – “Rosewood” comprises a range of agricultural buildings, including a homestead built in 1915. We propose to undertake archival recording of the homestead and a range of associated buildings before construction commences.

Economic

The economic assessment determined that TGEP would result in the following economic benefits over the life of the project.

- Direct employment of up 363 people, plus contractors and indirect jobs
- Payment of \$258.26 million in wages (excluding on-costs) over the life of the project
- Expenditure of approximately \$115 million in capital costs
- Expenditure of approximately \$788 million in operation costs over the life of the project, of which 50% are expected to be spent within the local area and 80% within NSW
- Continued payments to local, state and federal governments
- Continued annual community contributions, which in 2021 amounted to approximately \$270,000.

Social

In undertaking the Social Impact Assessment, we sought to engage with the community to ensure key stakeholders had the opportunity to be heard and have their concerns factored into the decision-making process.

The Social Impact Assessment has assessed both the positive and negative social impacts of the project. We have consulted with each of the affected neighbours to assess and address their concerns to the extent practicable.

Despite these impacts, the project would result in substantial positive impacts for the wider community in terms of continuation of employment, workforce and supplier expenditure, and community investment.

Other happenings at TGO

Modification 6

Last year, TGO gained approval (Modification 5) to build a second residue storage facility (RSF2) to support the next phase of gold production at TGO. We expect to commission the new RSF in early 2023.

In the meantime, we will soon submit a sixth application to modify our planning consent (Modification 6, or MOD6) for one final wall lift on the existing RSF.

RSF1 is split into two cells, and currently approved to Stage 9 for Cell 1 (west) and Stage 8 for Cell 2 (east). We're seeking approval for Stage 9 of Cell 2 – comprising a 2m lift to bring it to the same height as Cell 1.

The MOD6 report will be available on the NSW Department of Planning and Environment's (DPE) Major Projects website once submitted.



We're seeking approval for a final wall lift on RSF1

Vent shaft for exploration drive

We're about to begin construction of a temporary ventilation shaft on TGO-owned land around 100m north of McNivens Lane. This will be one of the shafts needed to ventilate the long exploration drive that extends from our underground mine underneath Wyoming One towards the Roswell deposit.

The ventilation shaft will be created using a reaming head to carve out a smooth bore using a raise bore drilling rig. The final shaft will have a diameter of 2.4m and a depth of approximately 220m, which is the depth of the exploration drive at that point.

For the safety of people and animals, as well as prevention of debris entering, the shaft will be capped with a low-profile concrete and metal structure to allow air movement only. This will be no more than 1.5m high. We'll also build a chain-link fence around the structure to prevent access and risk to persons and fauna. In the future this vent shaft will become redundant and capped over with concrete to permanently prevent any access.

We've developed nearly 1.5km of the exploration drive so far. At expected completion in March 2023 the exploration drive will be nearly 3km long and decline to a depth of 450m at a gradient of one in seven (14.3%)

EPA video

Last November, TGO was pleased to host a communications and video production team from the NSW Environment Protection Authority (EPA) to shoot footage for an EPA recruitment video. We enjoyed the opportunity to showcase our operations. The final video, which outlines the day-to-day activities of an EPA officer, will be available on the EPA website career page soon.



TGO took part in shooting an EPA video.

Find. Enhance. Deliver.



Community

Supporting the Narromine Star

TGO is proud to be a Foundation Supporter of the Narromine Star, a new independent local newspaper launched on 4 November 2021. The weekly paper is available in both digital and printed formats, with the latter distributed via newsagencies, petrol stations and other storefronts in Narromine and surrounds.

According to General Manager Lucie Peart, the Narromine Star has been embraced by the local community, with multiple schools and interest groups contributing stories and news.

"We're very thankful for TGO's year-long commitment as a Foundation Supporter," Lucie said. "It has helped

provide a solid launchpad to get the paper off the ground. We've been able to employ a full-time journalist and another administrative position, giving a local young person a start."

Lucie, who also publishes the Gilgandra Weekly and Nyngan Weekly, established the Narromine Star in partnership with Tim Pankhurst, publisher of the Dubbo Photo News.

Their ambition is to grow the publication into a self-supporting enterprise that provides a local legacy for future generations.

During its first few months, the Narromine Star has featured a number of stories about TGO employees and activities. We look forward to sharing more stories with the local community over the coming year.

Shop local, says mining operator

By NATALIE LEWIS
Work being done on site by Tomingley Gold Operations, near the town of Narromine. The company is investing in the local economy by purchasing goods and services from local businesses.



Growing for gold

How mining and agriculture are working together

IF you thought mining and agriculture couldn't peacefully co-exist, think again. At a time when the land on which we grow our nation's food and fibre is more precious than ever, Tomingley Gold Operations (TGO) - a project of Alkane Resources - is acutely conscious of the need to preserve and protect agriculture. Hand, and is going above and beyond to meet that goal. Alkane's Dubbo-based General Manager, Mike Sutherland, is more conscious than most of just how important it is for mining operations such as TGO to operate harmoniously with agriculture.



Alkane's Dubbo-based General Manager, Mike Sutherland.

Residential mine with a great team environment

By NATALIE LEWIS
As a residential mine, Alkane's Tomingley Gold Operations (TGO) is in the fortunate position of being a part of the workforce live in the local area. Many workers are from Dubbo, Parkes, Forbes, and other nearby towns. The company's human resources manager, Debbie Hollingsworth, said this has provided a positive work-life balance for the staff.

Worker shortage needs innovation

By NATALIE LEWIS
The mining industry is facing a significant shortage of workers, particularly in the areas of skilled trades and engineering. Alkane Resources is investing in training and development programs to attract and retain talent.

The overall benefit of TGO to the productivity of the community is significant, says Mike. "TGO produces a significant amount of the GDP (Gross Domestic Product) of the Narromine Shire, and Parkes and Dubbo also benefit from the employment that stems from Tomingley. The longer that economic activity goes on, the greater the benefit to Narromine and the surrounding areas."

More changing of the CCC guard

Long-standing member of the TGO Community Consultative Committee (CCC) **Ben Rees** has resigned after serving on the committee for almost a decade. Ben joined the CCC when it was first established in 2013 and we thank him for his time and contribution over the years.

The NSW Department of Planning and Environment has appointed **Greg Cannon**, a well-known resident of Tomingley, to replace Ben on the committee. Greg operates a transport business in the village and is also involved with the agricultural industry in the district.

We also thank outgoing Narromine Shire Council representative **James Craft** for his contribution to the CCC. James did not seek re-election at the last local government election and resigned from the CCC in late 2021.

Narromine Shire Council has nominated **Cr Les Lambert**, who has been a councillor for a number of years, to be the council representative on the CCC.

We welcome both Greg and Les to the CCC and look forward to working with them into the future.

Community fund

TGO continues to support community projects and events through the Tomingley Gold Project Community Fund. Funding is awarded on a submission basis, with final approval by the Narromine Shire Council.

The second round of 2021 applications were decided in November as follows:

- Narromine Gorillas Rugby Union / Narromine Jets Rugby League Clubs – **\$15,000** purchase of clubhouse appliances and first aid equipment.
- Narromine High School – **\$1,200** Senior students Sydney Trip
- Narromine High School – **\$2,500** Junior students Great Aussie Bush Camp
- Narromine Hospital Auxiliary – **\$5,000** purchase and update of medical equipment

- Tomingley Christmas Festival – **\$6,239** entertainment, insurance & marketing
- Teacher Earth Science Education Program – **\$2,286.90** purchase of educational resources
- Tomingley Picnic Race Club – **\$2,500** Family trivia night (see below)

Applications for the first round of 2022 funding have recently closed; successful applicants will be announced in the coming months.

Family trivia night

Held in the Tomingley Memorial Hall last December, the Family Trivia Night provided an opportunity for the community to come together after a difficult year due to the COVID pandemic.

Entry and refreshments were provided free of charge, and the funding also covered prizes.

The night proved a great success for the community, who tested their general knowledge in teams of eight.



Tomingley Picnic Race Club held a family trivia night in December

Submission in relation to the Tomingley Gold Extension Project Site SSD-9176045

Name			
Address			
I would like to	<input type="checkbox"/> Support the Application <input type="checkbox"/> Object to the Application <input type="checkbox"/> Make comment on the Application		
Reasons for your support or objection or comment			
I have / have not (circle relevant) made reportable political donations in the previous two years			
Signed:		Date:	

Post this form by 28 March 2022 to:
Mandana Mazaheri
Planning and Assessment
Department of Planning and Environment
Locked Bag 5022
Parramatta NSW 2124

