

Monthly Noise Monitoring Assessment

Tomingley Gold Mine, September 2021

Prepared for: Tomingley Gold Operations Pty Limited
September 2021
MAC160270-2021RP9



Document Information

Monthly Noise Monitoring Assessment

Tomingley Gold Mine, September 2021

Prepared for: Tomingley Gold Operations Pty Limited



Prepared by: Muller Acoustic Consulting Pty Ltd

PO Box 678, Kotara NSW 2289

ABN: 36 602 225 132

P: +61 2 4920 1833

www.mulleracoustic.com

Document ID	Status	Date	Prepared By	Signed	Reviewed By	Signed
MAC160270-2021RP9	Final	16 September 2021	Nicholas Shipman		Oliver Muller	

DISCLAIMER

All documents produced by Muller Acoustic Consulting Pty Ltd (MAC) are prepared for a particular client's requirements and are based on a specific scope, circumstances and limitations derived between MAC and the client. Information and/or report(s) prepared by MAC may not be suitable for uses other than the original intended objective. No parties other than the client should use or reproduce any information and/or report(s) without obtaining permission from MAC. Any information and/or documents prepared by MAC is not to be reproduced, presented or reviewed except in full.

CONTENTS

1 INTRODUCTION5

2 ENVIRONMENTAL PROTECTION LICENSE NOISE LIMITS.....7

3 METHODOLOGY9

 3.1 LOCALITY9

 3.2 ASSESSMENT METHODOLOGY9

4 RESULTS 11

 4.1 ASSESSMENT RESULTS - LOCATION R2..... 11

 4.2 ASSESSMENT RESULTS - LOCATION R3/R29 12

 4.3 ASSESSMENT RESULTS - LOCATION R4..... 13

 4.4 ASSESSMENT RESULTS - LOCATION R5..... 14

 4.5 ASSESSMENT RESULTS - LOCATION R6..... 15

 4.6 ASSESSMENT RESULTS - LOCATION R23..... 16

5 DISCUSSION 17

 5.1 DISCUSSION OF RESULTS - LOCATION R2 17

 5.2 DISCUSSION OF RESULTS - LOCATION R3/R29..... 17

 5.3 DISCUSSION OF RESULTS - LOCATION R4 17

 5.4 DISCUSSION OF RESULTS - LOCATION R5 17

 5.5 DISCUSSION OF RESULTS - LOCATION R6 18

 5.6 DISCUSSION OF RESULTS - LOCATION R23 18

6 COMPARISON OF ATTENDED AND UNATTENDED MONITORING RESULTS 19

7 CONCLUSION 21

APPENDIX A - GLOSSARY OF TERMS

This page has been intentionally left blank

1 Introduction

Muller Acoustic Consulting Pty Ltd (MAC) has been commissioned by Tomingley Gold Operations Pty Ltd (TGO) to complete a Noise Monitoring Assessment (NMA) for Tomingley Gold Mine (the 'mine'), Tomingley, NSW.

The NMA involved quantifying the noise contribution of the mine by direct attended measurements to determine mining noise emissions so that effective management and controls can be implemented where required. The monitoring has been conducted in accordance with the TGO Noise Management Plan and in general accordance with Conditions L4.2 to L4.7 of the EPL at six representative receiver locations. It is noted that this assessment has been completed as part of an internal noise management initiative and does not form part of the annual noise monitoring program to address conditions of the Environmental Protection License (EPL).

The assessment has been conducted in accordance with the following documents:

- NSW Environment Protection Authority (EPA), Noise Policy for Industry (NPI), 2017;
- Environment Protection Licence EPL 20169 (EPL); and
- Australian Standard AS 1055:2018 - Acoustics - Description and measurement of environmental noise - General Procedures.

A glossary of terms, definitions and abbreviations used in this report is provided in **Appendix A**.

This page has been intentionally left blank

2 Environmental Protection License Noise Limits

Historic assessments for the mine categorise receivers into Noise Assessment Groups (NAGs). The NAGs were derived based on ambient noise data that controlled receiver RBLs.

Table 1 reproduces the operational and sleep disturbance noise limits for assessed receivers referenced from the EPL that have been adopted for this NMA and are consistent with historic EPL monitoring locations.

Table 1 Noise Limits, dBA					
Noise Assessment Group	Receivers	Day	Evening	Night	
		LAeq(15min)	LAeq(15min)	LAeq(15min)	LA1(1min)
NAG A	R4, R5, R6	35	35	35	45
NAG B	R2	36	35	35	45
NAG C	R3, R29	45	35	35	45
NAG D	R23	43	38	36	45

Note: Refer to figure in Appendix 4 of Project Approval 09-0155 for noise locations. However, these criteria do not apply if the Proponent has an agreement with the relevant owner(s) of these residences / land to generate higher noise levels, and the Proponent has advised the Department of Planning and Infrastructure and EPA in writing of the terms of this agreement.

This page has been intentionally left blank

3 Methodology

3.1 Locality

TGO is located to the south of the village of Tomingley, NSW. Receivers in the locality surrounding the mine are primarily rural/residential and for consistency the naming conventions for each receiver have been retained from historic noise assessments. The monitoring locations with respect to the mine are presented in the locality plan shown in **Figure 1**.

3.2 Assessment Methodology

The attended noise survey was conducted in general accordance with the procedures described in Australian Standard AS 1055:2018, "Acoustics - Description and Measurement of Environmental Noise" and the EPL. Measurements were carried out using a Svantek Type 1, 971 noise analyser between Tuesday 7 September 2021 and Thursday 9 September 2021. The acoustic instrumentation used carries current NATA calibration and complies with AS/NZS IEC 61672.1-2019-Electroacoustics - Sound level meters - Specifications. Calibration of all instrumentation was checked prior to and following measurements. Drift in calibration did not exceed ± 0.5 dBA.

Both evening and night measurements were of 15 minutes in duration. Where possible, throughout each survey the operator quantified the contribution of each significant noise source. Extraneous noise sources were excluded from the analysis to calculate the $L_{Aeq}(15min)$ mine noise contribution for comparison against the relevant EPL limit.

Prevailing meteorological conditions for the monitoring period were sourced from TGO's meteorological station and analysed in accordance with Appendix D1 of the NPI to determine the stability category present at the time of each measured sample. This was undertaken to determine applicability of results in accordance with Condition L4.3 of the EPL. Results obtained during non-prevailing meteorological conditions (ie F Class Stability in conjunction with a 2m/s drainage or G Class Stability) are considered not applicable against the EPL criteria.

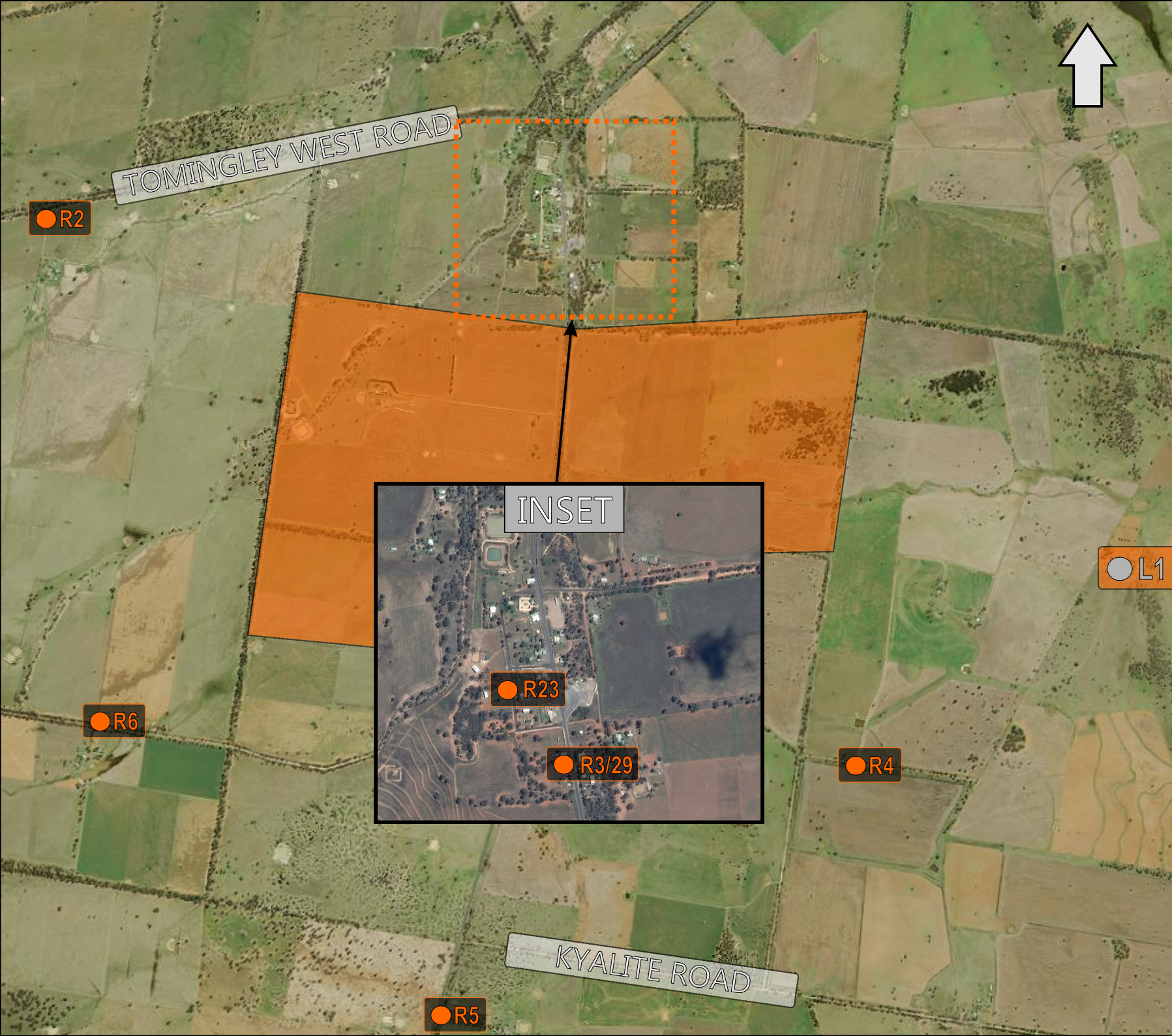





FIGURE 1
LOCALITY PLAN
 REF: MAC160270-2021RP7



KEY	
	UNATTENDED LOGGER LOCATION
	RECEIVER LOCATION
	SITE LOCATION



*Imagery Source - 6MAPS

4 Results

The monitoring and assessment results are presented in individual tables for each assessment location.

4.1 Assessment Results - Location R2

The results of the attended noise measurements at location R2 for the September 2021 survey are summarised in **Table 2** with the relevant EPL limits, the calculated mining noise contribution and prevailing meteorological conditions at the time of each measurement.

Table 2 Operator-Attended Noise Survey Results – Location R2							
Date	Time (hrs)	Descriptor (dBA re 20 µPa)			EPL Limit	Meteorology ¹	Description and SPL, dBA
		L _{Amax}	L _{Aeq}	L _{A90}			
07/09/2021	21:45 (Evening)	44	35	32	35	WD: N	Insects 32-41
						WS: 0.1m/s	Dog bark 34-44
Stab Class: D							TGO Processing 32-36
TGO Site L _{Aeq} (15min) Contribution							33
07/09/2021	22:00 (Night)	44	36	33	35	WD: N	Insects 30-44
						WS: 0.1m/s	TGO Processing 29-32
Stab Class: D							
TGO Site L _{Aeq} (15min) Contribution							31
08/09/2021	21:45 (Evening)	47	34	31	35	WD: ENE	Insects 29-31
						WS: 0.1m/s	Livestock 29-36
Stab Class: F							Birds 29-47
							TGO Processing 29-34
TGO Site L _{Aeq} (15min) Contribution							31
08/09/2021	22:00 (Night)	54	33	30	35	WD: ENE	Insects 28-30
						WS: 0.1m/s	Birds 28-54
Stab Class: F							TGO Processing 28-32
TGO Site L _{Aeq} (15min) Contribution							30
09/09/2021	21:45 (Evening)	47	32	29	35	WD: W	Insects 32-34
						WS: 0.1m/s	Traffic 32-36
Stab Class: F							Birds 36-47
							TGO Inaudible
TGO Site L _{Aeq} (15min) Contribution							<20
09/09/2021	22:00 (Night)	64	41	29	35	WD: W	Insects 26-28
						WS: 0.1m/s	Traffic 26-64
Stab Class: F							TGO Inaudible
TGO Site L _{Aeq} (15min) Contribution							<20

Note 1: Meteorological data obtained from TGO's on-site weather station or by direct measurement by the operator.

4.2 Assessment Results - Location R3/R29

The results of the attended noise measurements at location R3/R29 for the September 2021 survey are summarised in **Table 3** with the relevant EPL limits, the calculated mining noise contribution and prevailing meteorological conditions at the time of each measurement.

Table 3 Operator-Attended Noise Survey Results – Location R3/R29

Date	Time (hrs)	Descriptor (dBA re 20 µPa)			EPL Limit	Meteorology ¹	Description and SPL, dBA
		L _{Amax}	L _{Aeq}	L _{A90}			
07/09/2021	21:03 (Evening)	88	67	43	35	WD: N	Insects <40
						WS: 0.1m/s	Traffic 40-88
Stab Class: E							TGO Hauling 40-44 (2 minutes)
TGO Site L _{Aeq} (15min) Contribution							33
07/09/2021	22:39 (Night)	85	66	37	35	WD: N	Insects <34
						WS: 0.1m/s	Traffic 34-85
Stab Class: D							TGO Processing 34-36
TGO Site L _{Aeq} (15min) Contribution							35
08/09/2021	21:13 (Evening)	87	69	46	35	WD: ENE	Traffic 42-87
						WS: 0.1m/s	Insects <35
Stab Class: E							TGO Hauling <35
TGO Site L _{Aeq} (15min) Contribution							<35
08/09/2021	22:52 (Night)	85	65	41	35	WD: ENE	Traffic 38-85
						WS: 0.1m/s	Insects 38-39
Stab Class: E							TGO Processing <35
TGO Site L _{Aeq} (15min) Contribution							<35
09/09/2021	20:58 (Evening)	89	68	41	35	WD: W	Traffic 37-89
						WS: 0.1m/s	TGO Inaudible
Stab Class: F							
TGO Site L _{Aeq} (15min) Contribution							<30
09/09/2021	22:39 (Night)	85	64	37	35	WD: W	Traffic 32-85
						WS: 0.1m/s	Insects 32-34
Stab Class: E							TGO Inaudible
TGO Site L _{Aeq} (15min) Contribution							<30

Note 1: Meteorological data obtained from TGO's on-site weather station or by direct measurement by the operator.

4.3 Assessment Results - Location R4

The results of the attended noise measurements at location R4 for the September 2021 survey are summarised in **Table 4** with the relevant EPL limits, the calculated mining noise contribution and prevailing meteorological conditions at the time of each measurement.

Table 4 Operator-Attended Noise Survey Results – Location R4							
Date	Time (hrs)	Descriptor (dBA re 20 µPa)			EPL Limit	Meteorology ¹	Description and SPL, dBA
		L _{Amax}	L _{Aeq}	L _{A90}			
07/09/2021	20:18 (Evening)	45	35	27	35	WD: N	Traffic 32-45
						WS: 0.3m/s	Insects 31-33
						Stab Class: E	TGO Inaudible
						TGO Site L _{Aeq} (15min) Contribution	
07/09/2021	23:27 (Night)	50	35	25	35	WD: N	Traffic 21-50
						WS: 0.2m/s	TGO Inaudible
						Stab Class: F	
						TGO Site L _{Aeq} (15min) Contribution	
08/09/2021	20:32 (Evening)	48	37	28	35	WD: ENE	Insects 23-25
						WS: 0.1m/s	Traffic 23-48
						Stab Class: E	TGO Inaudible
						TGO Site L _{Aeq} (15min) Contribution	
08/09/2021	23:38 (Night)	46	31	24	35	WD: S	Traffic 19-46
						WS: 0.1m/s	Insects <19
						Stab Class: E	TGO Inaudible
						TGO Site L _{Aeq} (15min) Contribution	
09/09/2021	20:12 (Evening)	53	36	30	35	WD: W	Traffic 31-53
						WS: 0.1m/s	Insects 29-31
						Stab Class: E	TGO Inaudible
						TGO Site L _{Aeq} (15min) Contribution	
09/09/2021	23:24 (Night)	53	37	28	35	WD: N	Insects 28-29
						WS: 0.1m/s	Traffic 27-53
						Stab Class: F	TGO Inaudible
						TGO Site L _{Aeq} (15min) Contribution	

Note 1: Meteorological data obtained from TGO's on-site weather station or by direct measurement by the operator.

4.4 Assessment Results - Location R5

The results of the attended noise measurements at location R5 for the September 2021 survey are summarised in **Table 5** with the relevant EPL limits, the calculated mining noise contribution and prevailing meteorological conditions at the time of each measurement.

Table 5 Operator-Attended Noise Survey Results – Location R5							
Date	Time (hrs)	Descriptor (dBA re 20 µPa)			EPL Limit	Meteorology ¹	Description and SPL, dBA
		L _{Amax}	L _{Aeq}	L _{A90}			
07/09/2021	19:56 (Evening)	81	62	37	35	WD: S	Traffic 35-81
						WS: 0.1m/s	Insects 35-37
						Stab Class: E	TGO Inaudible
						TGO Site L _{Aeq} (15min) Contribution	
07/09/2021	23:49 (Night)	82	59	31	35	WD: N	Insects 30-32
						WS: 0.1m/s	Traffic 30-82
						Stab Class: D	TGO Inaudible
						TGO Site L _{Aeq} (15min) Contribution	
08/09/2021	20:10 (Evening)	81	64	40	35	WD: NE	Insects 37-40
						WS: 0.1m/s	Traffic 37-81
						Stab Class: E	TGO Inaudible
						TGO Site L _{Aeq} (15min) Contribution	
08/09/2021	23:58 (Night)	80	62	39	35	WD: S	Insects <30
						WS: 0.1m/s	Traffic 30-80
						Stab Class: E	TGO Inaudible
						TGO Site L _{Aeq} (15min) Contribution	
09/09/2021	19:49 (Evening)	80	62	44	35	WD: W	Insects 42-44
						WS: 0.1m/s	Traffic 43-80
						Stab Class: F	TGO Inaudible
						TGO Site L _{Aeq} (15min) Contribution	
09/09/2021	23:46 (Night)	79	60	39	35	WD: N	Insects 38-44
						WS: 0.1m/s	Traffic 42-79
						Stab Class: E	TGO Inaudible
						TGO Site L _{Aeq} (15min) Contribution	

Note 1: Meteorological data obtained from TGO's on-site weather station or by direct measurement by the operator.

4.5 Assessment Results - Location R6

The results of the attended noise measurements at location R6 for the September 2021 survey are summarised in **Table 6** with the relevant EPL limits, the calculated mining noise contribution and prevailing meteorological conditions at the time of each measurement.

Table 6 Operator-Attended Noise Survey Results – Location R6							
Date	Time (hrs)	Descriptor (dBA re 20 μ Pa)			EPL Limit	Meteorology ¹	Description and SPL, dBA
		L _{Amax}	L _{Aeq}	L _{A90}			
07/09/2021	20:42 (Evening)	46	36	33	35	WD: N	Insects 32-34
						WS: 0.2m/s	Traffic 34-46
						Stab Class: E	TGO Inaudible
						TGO Site L _{Aeq} (15min) Contribution	
07/09/2021	23:01 (Night)	48	36	33	35	WD: N	Insects 31-34
						WS: 0.2m/s	Traffic 31-48
						Stab Class: F	TGO Inaudible
						TGO Site L _{Aeq} (15min) Contribution	
08/09/2021	20:57 (Evening)	57	41	38	35	WD: ENE	Insects 36-38
						WS: 0.1m/s	Traffic 36-57
						Stab Class: E	TGO Inaudible
						TGO Site L _{Aeq} (15min) Contribution	
08/09/2021	23:14 (Night)	47	38	35	35	WD: S	Traffic 32-42
						WS: 0.1m/s	Insects 32-34
						Stab Class: E	Livestock 32-47
						TGO Site L _{Aeq} (15min) Contribution	
09/09/2021	20:36 (Evening)	48	38	36	35	WD: W	Insects 35-37
						WS: 0.1m/s	Traffic 35-48
						Stab Class: E	TGO Processing <35
						TGO Site L _{Aeq} (15min) Contribution	
09/09/2021	23:01 (Night)	51	38	36	35	WD: N	Insects 34-35
						WS: 0.1m/s	Traffic 35-40
						Stab Class: E	Operator 40-51
						TGO Site L _{Aeq} (15min) Contribution	

Note 1: Meteorological data obtained from TGO's on-site weather station or by direct measurement by the operator.

4.6 Assessment Results - Location R23

The results of the attended noise measurements at location R23 for the September 2021 survey are summarised in **Table 7** with the relevant EPL limits, the calculated mining noise contribution and prevailing meteorological conditions at the time of each measurement.

Table 7 Operator-Attended Noise Survey Results – Location R23

Date	Time (hrs)	Descriptor (dBA re 20 µPa)			EPL Limit	Meteorology ¹	Description and SPL, dBA
		L _{Amax}	L _{Aeq}	L _{A90}			
07/09/2021	21:21 (Evening)	54	44	37	38	WD: N	Insects 35-37
						WS: 0.3m/s	Traffic 36-54
						Stab Class: D	TGO Processing <33
TGO Site L _{Aeq} (15min) Contribution							<33
07/09/2021	22:21 (Night)	56	44	38	36	WD: N	Insects 35-37
						WS: 0.2m/s	Traffic 35-56
						Stab Class: D	TGO Processing 34-36
TGO Site L _{Aeq} (15min) Contribution							35
08/09/2021	21:28 (Evening)	58	47	37	38	WD: ESE	Insects <36
						WS: 0.1m/s	Traffic 36-58
						Stab Class: D	TGO Processing <34
TGO Site L _{Aeq} (15min) Contribution							<34
08/09/2021	22:34 (Night)	57	47	38	36	WD: E	Traffic 35-57
						WS: 0.1m/s	Insects 35-37
						Stab Class: F	TGO Processing <35
TGO Site L _{Aeq} (15min) Contribution							<35
09/09/2021	21:17 (Evening)	58	46	38	38	WD: W	Insects 37-39
						WS: 0.1m/s	Traffic 35-58
						Stab Class: E	TGO Inaudible
TGO Site L _{Aeq} (15min) Contribution							<30
09/09/2021	22:21 (Night)	58	48	38	36	WD: W	Insects 36-37
						WS: 0.1m/s	Traffic 36-58
						Stab Class: F	TGO Inaudible
TGO Site L _{Aeq} (15min) Contribution							<30

Note 1: Meteorological data obtained from TGO's on-site weather station or by direct measurement by the operator.

5 Discussion

5.1 Discussion of Results - Location R2

Monitoring between Tuesday 7 September 2021 and Thursday 9 September 2021 identified that TGO processing was audible during four measurements at location R2. The estimated mining contribution was measured between <20dBA and 33dBA. TGO emissions remained below the relevant noise limit of 35dB LAeq(15min). Extraneous sources such as insects, dogs barking, livestock and birds were audible during the survey periods.

5.2 Discussion of Results - Location R3/R29

Monitoring between Tuesday 7 September 2021 and Thursday 9 September 2021 identified that TGO processing was audible during four measurements at location R3/29. The estimated mining contribution was measured between <30dBA and 35dBA. TGO emissions remained below the relevant noise limit of 35dB LAeq(15min). Extraneous sources such as traffic and insects were audible during the survey periods.

5.3 Discussion of Results - Location R4

Monitoring between Tuesday 7 September 2021 and Thursday 9 September 2021 identified that TGO was inaudible during all six measurements at location R4, therefore the relevant noise limit of 35dB LAeq(15min) was satisfied. Extraneous sources such as traffic and insects were audible during the measurements.

5.4 Discussion of Results - Location R5

Monitoring between Tuesday 7 September 2021 and Thursday 9 September 2021 identified that TGO was inaudible during all measurements at location R5. The estimated mining contribution remained below 35dBA, therefore the relevant noise limit of 35dB LAeq(15min) was satisfied. Extraneous sources such as traffic and insects were audible during the measurements.

5.5 Discussion of Results - Location R6

Monitoring between Tuesday 7 September 2021 and Thursday 9 September 2021 identified that TGO was audible during two measurements at location R6. The estimated mining contribution remained below 35dBA, therefore the relevant noise limit of 35dB LAeq(15min) was satisfied. Extraneous sources such as insects, traffic and livestock were audible during the measurements.

5.6 Discussion of Results - Location R23

Monitoring between Tuesday 7 September 2021 and Thursday 9 September 2021 identified that TGO was audible during four measurements at location R23. The estimated mining contribution remained below 35dBA, therefore the relevant noise limit of 38dB LAeq(15min) for evening and 36dB LAeq(15min) for night was satisfied. Extraneous sources such as insects and traffic were audible during the measurements.

6 Comparison of Attended and Unattended Monitoring Results

To address Condition 6 of Schedule 3 of the Project Approval, a program to calibrate and validate the real-time noise monitoring results with the attended monitoring results has been completed.

It is noted that the Thornycroft property (nearest to R4) has been adopted as an alternative location for this assessment, due to the real-time monitor located at the Brooklands property being temporarily unavailable.

Currently, TGO has an unattended real-time monitoring terminal installed at the Thornycroft property (nearest to R4). **Figure 1** identifies the location of the monitor with respect to the attended monitoring locations. It is noted that the Thornycroft unattended monitor is situated 2km north-east of the attended noise monitoring location R4, therefore, background (LA90) noise levels are significantly lower due to offset distance to highway traffic.

Historically, a comparison of mine noise contributions between attended and unattended noise monitoring demonstrates a general consistency between attended and unattended results at the Brooklands property. It was noted that wind, insects, birds, and highway traffic noise influenced measured noise levels for this assessment. Furthermore, for September 2021, results remained below the relevant criteria for both attended and unattended locations.

Table 8 provides a summary comparison of results between the attended and unattended noise surveys for R4.

Table 8 Comparison of Attended and Unattended Results – R4

Assessment Type	Time (hrs)	Descriptor (dBA re 20 µPa)			Criteria	Mine Noise Contribution	Meteorology ¹	Description and SPL, dBA
		LAmax	LAeq	LA90				
		Tuesday 7 September 2021						
Attended	20:18	45	35	27	35	<20	WD: N WS: 0.3m/s Stab Class: E	Traffic 32-45 Insects 31-33 TGO Inaudible
Unattended	20:15	41	28	25	35	<20		Insects TGO Inaudible
Attended	23:27	50	35	25	35	<20	WD: N WS: 0.2m/s	Traffic 21-50 TGO Inaudible
Unattended	23:30	40	30	24	35	<20	Stab Class: F	Traffic Insects TGO Inaudible
Wednesday 8 September 2021								
Attended	20:32	48	37	28	35	<20	WD: ENE WS: 0.1m/s Stab Class: E	Insects 23-25 Traffic 23-48 TGO Inaudible
Unattended	20:30	68	49	33	35	<20		Insects TGO Inaudible
Attended	23:38	46	31	24	35	<20	WD: S WS: 0.1m/s Stab Class: E	Traffic 19-46 Insects <19 TGO Inaudible
Unattended	23:30	44	31	26	35	<20		Insects Dogs Barking TGO Inaudible
Thursday 9 September 2021								
Attended	20:12	53	36	30	35	<20	WD: W WS: 0.1m/s Stab Class: E	Traffic 31-53 Insects 29-31 TGO Inaudible
Unattended	20:15	47	33	28	35	<20		Insects TGO Inaudible
Attended	23:24	53	37	28	35	<20	WD: N WS: 0.1m/s Stab Class: F	Insects 28-29 Traffic 27-53 TGO Inaudible
Unattended	23:30	54	34	30	35	<20		Insects Traffic TGO Inaudible

Note 1: Meteorological data obtained from TGO's on-site weather station or by direct measurement by the operator.

7 Conclusion

Muller Acoustic Consulting Pty Ltd (MAC) has completed a Noise Monitoring Assessment on behalf of Tomingley Gold Operations (TGO). The assessment was completed to provide monthly monitoring data so that TGO can actively quantify and manage site noise emissions.

Attended monitoring conducted between Tuesday 7 September 2021 and Thursday 9 September 2021 identified that TGO mine noise was occasionally audible during the measurement period. A review of monitoring data and operator attended observations determined that TGO contributions did not exceed relevant limits during applicable meteorological conditions.

This page has been intentionally left blank

Appendix A - Glossary of Terms

Several technical terms have been used in this report and are explained in **Table A1**.

Table A1 Glossary of Terms	
Term	Description
1/3 Octave	Single octave bands divided into three parts
Octave	A division of the frequency range into bands, the upper frequency limit of each band being twice the lower frequency limit.
ABL	Assessment Background Level (ABL) is defined in the NPI as a single figure background level for each assessment period (day, evening and night). It is the tenth percentile of the measured L90 statistical noise levels.
Ambient Noise	The noise associated with a given environment. Typically a composite of sounds from many sources located both near and far where no particular sound is dominant.
A Weighting	A standard weighting of the audible frequencies designed to reflect the response of the human ear to noise.
dBA	Noise is measured in units called decibels (dB). There are several scales for describing noise, the most common being the 'A-weighted' scale. This attempts to closely approximate the frequency response of the human ear.
dB(Z)	Decibels Linear or decibels Z-weighted.
Hertz (Hz)	The measure of frequency of sound wave oscillations per second - 1 oscillation per second equals 1 hertz.
LA10	A noise level which is exceeded 10 % of the time. It is approximately equivalent to the average of maximum noise levels.
LA90	Commonly referred to as the background noise, this is the level exceeded 90 % of the time.
LAeq	The summation of noise over a selected period of time. It is the energy average noise from a source, and is the equivalent continuous sound pressure level over a given period.
LAmx	The maximum root mean squared (rms) sound pressure level received at the microphone during a measuring interval.
RBL	The Rating Background Level (RBL) is an overall single figure background level representing each assessment period over the whole monitoring period. The RBL is used to determine the intrusiveness criteria for noise assessment purposes and is the median of the ABL's.
Sound power level (SWL)	<p>This is a measure of the total power radiated by a source. The sound power of a source is a fundamental location of the source and is independent of the surrounding environment. Or a measure of the energy emitted from a source as sound and is given by :</p> $= 10 \cdot \log_{10} (W/W_0)$ <p>Where : W is the sound power in watts and W₀ is the sound reference power at 10-12 watts.</p>

Table A2 provides a list of common noise sources and their typical sound level.

Table A2 Common Noise Sources and Their Typical Sound Pressure Levels (SPL), dBA

Source	Typical Sound Level
Threshold of pain	140
Jet engine	130
Hydraulic hammer	120
Chainsaw	110
Industrial workshop	100
Lawn-mower (operator position)	90
Heavy traffic (footpath)	80
Elevated speech	70
Typical conversation	60
Ambient suburban environment	40
Ambient rural environment	30
Bedroom (night with windows closed)	20
Threshold of hearing	0

Figure A1 – Human Perception of Sound



Muller Acoustic Consulting Pty Ltd

PO Box 678, Kotara NSW 2289

ABN: 36 602 225 132

Ph: +61 2 4920 1833

www.mulleracoustic.com

