



TOMINGLEY
GOLD OPERATIONS PTY LTD
(A wholly owned subsidiary of Alkane Resources Ltd)

Tomingley Gold Operations

Cultural Heritage Management Plan



TOMINGLEY
GOLD OPERATIONS PTY LTD
(A wholly owned subsidiary of Alkane Resources Ltd)

Tomingley Gold Operations

Cultural Heritage Management Plan

Table of Revisions

Revision Number	Revision Date	Prepared By	Approved By:	Comments
Revision 1	October 2012	Colleen Measday & Jodie Benton (OzArk)	Michael Sutherland	Submission for Approval
Revision 2	October 2012	Colleen Measday & Jodie Benton (OzArk)	Michael Sutherland	Updated to include comments by DPI
Revision 3	February 2015	Mark Williams	Sean Buxton	Annual Review
Revision 4	September 2016	Mark Williams	Sean Buxton	Review following MOD 3 Approval

TABLE OF CONTENTS

1.	INTRODUCTION AND SCOPE	5
2.	BACKGROUND.....	5
3.	LEGISLATIVE REQUIREMENTS.....	8
3.1	LEGISLATIVE FRAMEWORK	8
3.2	ABORIGINAL STAKEHOLDER CONSULTATION.....	9
4.	MANAGEMENT OF HERITAGE SITES	9
4.1	IMPACTS AND MANAGEMENT FOR ABORIGINAL HERITAGE SITES.....	9
4.2	IMPACTS AND MANAGEMENT FOR NON-ABORIGINAL HERITAGE SITES	10
5.	COMMUNITY CONSULTATION	10
5.1	ABORIGINAL COMMUNITY CONSULTATION	10
5.1.1	Background.....	10
5.1.2	Aboriginal Community Involvement for Mine Site Study Area Survey and Assessment	12
5.1.3	Aboriginal Community Involvement for the PHTETL Study Area Survey and Assessment	13
5.1.4	Aboriginal Community Involvement for the TNWP Study Area Survey and Assessment	13
5.2	OTHER COMMUNITY INVOLVEMENT	13
5.3	ACCESS TO HERITAGE ITEMS.....	13
5.4	ON GOING COMMUNITY INVOLVEMENT	14
6.	ADDITIONAL INVESTIGATION REQUIRED TO DETERMINE THE MANAGEMENT OF TNWP-OS1 WITH PAD	15
7.	MANAGEMENT OF THE ABORIGINAL HERITAGE ITEMS	16
7.1	SITES THAT REQUIRE FENCING – MANAGEMENT GROUP 1.....	18
7.2	SITE REQUIRING COVERING – MANAGEMENT GROUP 2.....	22
7.3	SITE IMPACTS – MANAGEMENT GROUP 3.....	23
7.3.1	Site TGP-ST7 and TGP-ST10.....	23
7.3.2	Site TNWP-OS1 with PAD.....	23
7.3.3	General Management Measures / Unidentified Finds Protocol.....	23

TABLE OF CONTENTS

8.	MANAGEMENT OF NON-ABORIGINAL HERITAGE ITEMS	25
9.	OBJECTIVES AND TARGETS.....	26
10.	MONITORING	26
11.	CORRECTIVE ACTION AND PREVENTATIVE ACTION.....	26
12.	INCIDENTS	26
13.	AUDITING	26
14.	REVIEW	27
15.	ROLES AND RESPONSIBILITY	27
16.	COMPETENCE TRAINING AND AWARENESS	27
17.	REFERENCES	27

APPENDICES

Appendix 1	Figures showing impacts and recorded heritage sites.....	28
Appendix 2	Consultation with NSW OEH and Endorsement by the Director General of OzArk	31
Appendix 3	Consultation with Aboriginal Stakeholders.....	34

1. INTRODUCTION AND SCOPE

The Cultural Heritage Management Plan (CHMP) has been prepared as a tool to manage cultural heritage related issues during the operation of the Tomingley Gold Operations (TGO). It will be used by TGO personnel as the first point of reference for cultural heritage related issues.

This plan synthesises the recommendations pertinent to the management of recorded Aboriginal and Non-Aboriginal heritage sites related to the TGO. This document has been developed in consultation with registered Aboriginal community stakeholders and the NSW Office of Environment and Heritage (OEH).

The CHMP sits under the overarching Environmental Management Strategy for the project and with the following Environmental Management Plans forms the basis for environmental management on the TGO. The other Environmental Management Plans include:

- Noise Management Plan;
- Blast Management Plan;
- Biodiversity Management Plan;
- Air Quality and Greenhouse Gas Management Plan;
- Traffic Management Plan;
- Hazardous Materials Management Plan; and
- Water Management Plan.

2. BACKGROUND

Tomingley Gold Operations Pty Ltd (a wholly owned subsidiary of Alkane Resources Ltd) will mine 51.6 million tonnes of material from which it will process 6.5 million tonnes of gold bearing ore over a 9 year period. The TGO will comprise an open cut mine at each of the four open cut deposits as well as an underground mine below the Caloma One open cut.

Operations at the mine will include the extraction of ore and onsite processing of that ore into gold. The site will also comprise a processing plant, three waste rock emplacements (WRE), a residue storage facility (RSF) and associated civil infrastructure.

Construction of the mine was undertaken in 2013, with mining and processing operations planned to take nine years and site rehabilitation an additional year following the cessation of mining.

OzArk Environmental and Heritage Management Ltd. was engaged to undertake an assessment of the Aboriginal and Non-Aboriginal heritage sites that may be impacted as a result of construction and operation associated with TGO.

OzArk assessed the project in three separate study areas as indicated below. Maps for these areas are included in Appendix 1. (The location of the site is shown in Figure 1):

- Mine Site Operations (MSO) – 748 ha;
- Peak Hill to Tomingley Electricity Transmission Line (PHTETL) – 21.1 km in length, 30 m in width; and
- Tomingley to Narromine Water Pipeline (TNWP) – 46 km in length.

The Aboriginal heritage component of the environmental assessment recorded sixty Aboriginal sites, of which fifty-four were modified trees (43 scarred, 9 possibly scarred, 1 resource gathering and 1 carved); three were open artefact sites (one with PAD), 2 were isolated finds and one was a ceremonial / dreaming site. Details of these sites can be found in the Indigenous Heritage Assessment Report (OzArk 2009).

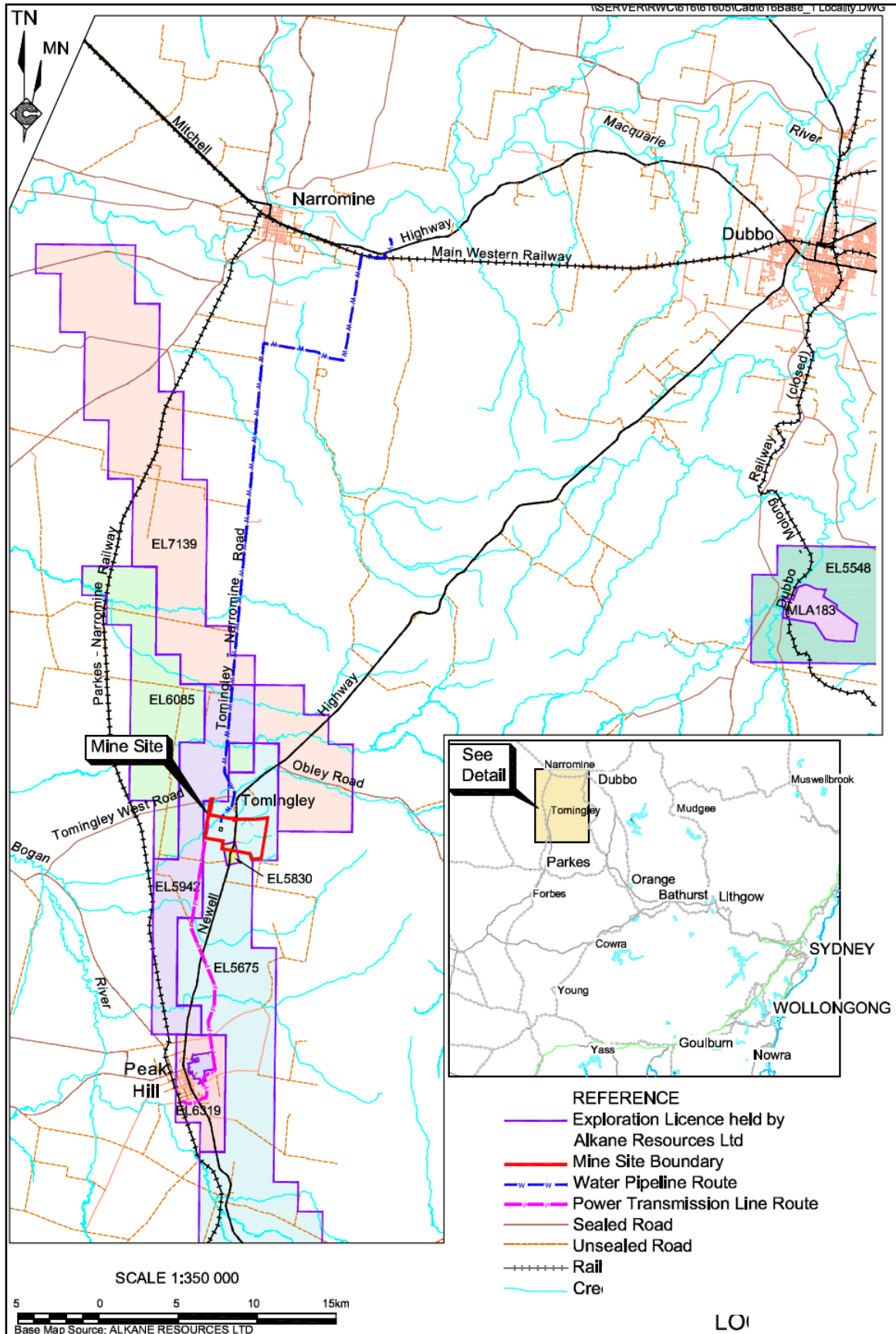
Of the 60 recorded sites, four are likely to be affected directly by the proposed works, while the remainder will be protected during project activities. The 56 protected sites will require protective measures (fencing) to ensure their protection against inadvertent impacts.

The Non-Aboriginal heritage component of the study recorded eight features. These included four items of moveable heritage, two building remnants and two blazed trees. Of these, six were located within the Mine Site Study Area and two were recorded during the TNWP assessment. No items of Non-Aboriginal heritage were recorded within the PHTETL Study Area.

Three Aboriginal heritage items are located within a single site located within the project impact footprint. Test excavations were undertaken at this site (Site HS6, OzArk 2012) to determine more accurately site significance. This assessment concluded that the site had been formed via the landholder pushing up and burning previously scattered machine remnants, and that there were no in-situ remains present. Consequently, the site was assessed as holding little to no heritage significance.

Management of the Non-Aboriginal heritage resource is summarised in Section 8.

Figure 1 - Locality Map (Source: RWC 2009)



3. LEGISLATIVE REQUIREMENTS

3.1 LEGISLATIVE FRAMEWORK

TGO was assessed under Part 3A of the Environmental Planning and Assessment Act 1979 (EP&A Act). Consequently the provisions of the National Parks and Wildlife Act 1974 (NPW Act) in relation to impacts to Aboriginal cultural heritage do not apply. Instead, an Environmental Assessment was undertaken and Project Approval was granted based on this assessment and the resulting Statement of Commitments.

Project Approval was granted by the NSW Department of Planning and Infrastructure on 24th July 2012 and Schedule 3, condition 39 requires the preparation of a Heritage Management Plan (this plan) as follows:

“The Proponent shall prepare and implement a Heritage Management Plan for the project to the satisfaction of the Secretary. This plan must:

- (a) be prepared by a suitably qualified and experienced person(s) whose appointment has been endorsed by the Secretary;*
- (b) be prepared in consultation with OEH and the Aboriginal stakeholders (in relation to the management of Aboriginal heritage values);*
- (c) be submitted to the Secretary for approval by the end of January 2013, unless the Secretary agrees otherwise;*
- (d) include the following for the management of Aboriginal heritage:*
 - (i) a description of the measures that would be implemented for:*
 - protecting, monitoring and/ or managing heritage items on site;*
 - implementing proposed archaeological investigations and/ or salvage measures for heritage items on site;*
 - managing the discovery of any human remains or previously unidentified Aboriginal objects on site;*
 - maintaining and managing reasonable access for Aboriginal stakeholders to heritage items on site;*
 - on-going consultation with the Aboriginal stakeholders in the conservation and management of Aboriginal cultural heritage on site; and*
 - ensuring workers on-site receive suitable heritage inductions prior to carrying out works on the site, and that suitable records are kept of these inductions;*
 - (ii) a strategy for the storage of any heritage items salvaged on site, both during the project and in the long term;*
- (e) include the following for the management of non-Aboriginal heritage:*
 - (i) a description of the measures that would be implemented for:*
 - protecting, monitoring and/ or managing heritage items on site;*
 - managing the discovery of any previously unidentified non-Aboriginal objects on site;*
 - and*
 - ensuring workers on-site receive suitable heritage inductions prior to carrying out works on the site, and that suitable records are kept of these inductions; and*
 - (ii) a strategy for the storage of any heritage items salvaged on site, both during the project and in the long term.”*

This plan has been prepared in consultation with NSW Office of Environment and Heritage. Details of the consultation are included in Appendix 2.

The appointment of OzArk Environmental and Heritage Management’s Jodie Benton as the suitably qualified person to prepare the plan was endorsed by the Director General. The email showing this endorsement is attached in Appendix 2.

Revision 1 of this plan was submitted to the Director General for approval on 12th October 2012.

3.2 ABORIGINAL STAKEHOLDER CONSULTATION

This plan has been developed in consultation with Aboriginal stakeholders and on 13th June 2012 a final meeting was held to review the CHMP and confirm its adequacy. From this meeting it was agreed that the CHMP is comprehensive and adequate. Minutes from this meeting are included as Appendix 3.

4. MANAGEMENT OF HERITAGE SITES

The Aboriginal heritage component of the environmental assessment recorded sixty Aboriginal sites, of which fifty-four were modified trees (43 scarred, 9 possibly scarred, 1 resource gathering and 1 carved); three were open artefact sites (one with PAD), 2 were isolated finds and one was a ceremonial / dreaming site. Details of these sites can be found in the Specialist Consultant Studies Compendium for the Tomingley Gold Project, Volume 2, Part 5: Aboriginal Heritage Assessment (OzArk 2009).

4.1 IMPACTS AND MANAGEMENT FOR ABORIGINAL HERITAGE SITES

Of the 60 recorded sites, four sites are likely to be affected directly by the project, while the remainder will be protected. The 56 protected sites require protective measures (fencing etc.) to ensure their protection against inadvertent impacts.

The 60 sites have been grouped according to recommended management requirement. This grouping simplifies the management strategy. Despite the usefulness of this consolidation, it should be acknowledged that:

- There are always site specific adaptations of various management techniques based on features / factors relevant to individual sites and landforms; and
- Some sites will require more than one management technique to be applied. Some management may be required in the pre-construction phase (i.e. test / salvage excavation, surface collection / relocation), while the same sites may require further management to be applied during construction, (i.e. monitoring of works) or post-construction (removal of fences).

With this in mind, the categorisation of sites was undertaken according to their primary management, i.e. the actions which need to occur first in the management sequence.

The groups and recommendations are summarised as follows:

- **Group 1 – No direct impact: Sites to be fenced off to avoid inadvertent impact (56):**
TGP-OS1; TGP-IF1 and 2; TGP-ST1-6, 8-9 and 11-15; TNWP-ST1 to 36;
TNWP-ACD1; PMETL-ST1 to 3.
- **Group 2 – Sites requiring covering using geofabric and gravel (1):** TGP-OS2.
- **Group 3 – Sites being impacted: tree removal (2):** TGP-ST7 and TGP-ST10 and open site (1) TNWP-OS1, requiring heritage inductions for construction crew, including stop work protocols, as well as limited monitoring of trenching through site TNWP-OS1.

4.2 IMPACTS AND MANAGEMENT FOR NON-ABORIGINAL HERITAGE SITES

The Non- Aboriginal heritage component of the study recorded eight features. These included four items of moveable heritage, two building remnants and two blazed trees. Of these, the proposed works will disturb three sites, TGP-HS4, TGP-HS5 and TGP-HS6.

5. COMMUNITY CONSULTATION

5.1 ABORIGINAL COMMUNITY CONSULTATION

5.1.1 Background

The primary components of the TGO fall within the boundaries of the Peak Hill Local Aboriginal Land Council (PHLALC), although approximately half of the TNWP falls within the Narromine Local Aboriginal Land Council (NLALC) boundary.

The TGO Aboriginal community consultation has been undertaken as per the Department of Environment and Conservation (DEC 2005) Interim Community Consultation Requirements (ICCRs) as recommended in the DEC 2005 Guidelines for Aboriginal Cultural Heritage Impact Assessment and Community Consultation (for Part 3A assessments).

The ICCRs were initiated from project inception. Advertisements were placed in the Parkes Champion Post and the Narromine News on the 22nd of April 2009. Letters were also sent to the LALCs, OEH, Narromine Shire and Parkes Shire Councils and the Register of Aboriginal Owners. A second round of letters were then sent to additional groups identified as a consequence of the first round of advertising and agency contact. As a result of these processes, the following organisations / individuals formally registered interest by the close of Stage 1:

- Narromine LALC (NLALC);
- Peak Hill LALC (PHLALC);
- Little Burning Mountain Aboriginal Corp (LBMAC);
- Mooka Traditional Owner Corporation (MTOC);
- Wiradjuri Council of Elders (WCE);
- Trevor Robinson (individual); and
- Peter Peckham (individual).

A search of the National Native Title Tribunal website (last updated 31 March 2010) revealed that there are currently no native title claims over any of the three study areas.

ICCR Stage 2 letters describing the proposed heritage assessment methodology were sent to all stakeholders with a request for any available specific cultural information, as well as inviting comment / input on the methodology proposed. Feedback from the Stage 2 letters was incorporated into the assessment design prior to fieldwork being initiated. Responses to the Stage 2 letters can be found in OzArk (2009: Appendix 2).

As a result of a project information session held by Alkane in Peak Hill, two additional groups then registered interest to be consulted as stakeholders, namely:

- The Bogan River Peak Hill Wiradjuri Aboriginal Corporation (BPHWAC); and
- Bulgandramine Youth Development Aboriginal Corporation (BYDAC).

Several positions were made available for Aboriginal community representatives to participate in the heritage assessment fieldwork. These were chosen from the pool of registered stakeholders. Choice of possible participants was based on several factors including experience with and local knowledge of Aboriginal heritage places / sites in the Tomingley area, provision

of relevant Workers Compensation insurance documents and breadth of representation in relation to group membership. Irrespective of which representatives participated in the field survey, all groups who have expressed interest in being part of the consultation process have been kept informed of the results, invited to attend meetings and to comment on draft documents prepared for the project.

A meeting was held on the 9th of September 2009 for the TGO Registered Stakeholders to discuss the management of sites within the TGO Project Site. Minutes from this meeting can be found in Indigenous Heritage Assessment Report OzArk (2011a: Appendix 2). The carved tree recorded in the Mine Site study area consumed the majority of meeting focus as the tree is considered by the community to be very significant. Consensus was that it could represent a burial (nearby or inside the tree itself). Due to the importance of the carved tree, the TGO Registered Stakeholders wished to defer further discussion about its management until they had an opportunity to hold their own community meeting.

Following an in-house Aboriginal community meeting on the 14th of September 2009, another meeting was held between the TGO Registered Stakeholders and Alkane on the 17th of September 2009 to discuss the establishment of a Peak Hill Wiradjuri Reference Group, i.e. a forum through which Alkane can present proposed impacts on, and management of cultural heritage and the Aboriginal groups and individuals can respond.

Aboriginal stakeholders representing a number of registered Aboriginal organisations in Peak Hill provided Alkane with an "issues for negotiation paper" (presented in Appendix 3). This was subsequently formalised into a Community Engagement Protocol (CEP) between Alkane and the Peak Hill Wiradjuri Aboriginal groups. The CEP was signed by the Managing Director of Alkane and representatives of the following six registered organisations on 15th June 2010 (Appendix 3).

- Peak Hill Local Aboriginal Land Council.
- Little Burning Mountain Aboriginal Corporation.
- Bogan River Peak Hill Wiradjuri Aboriginal Corporation.
- Bulgandramine Youth Development Aboriginal Corporation.
- Warramunga Community Advancement Co-operative Society Ltd. And
- Peak Hill Aboriginal Medical Service.

The CEP essentially captures the mining company's objectives, Aboriginal people's aspirations and principles for negotiations, with heritage management being only one component of this document. The six registered organisations are described as the Peak Hill Aboriginal Reference Group (Reference Group).

Since the CEP was established, two individuals (Diane and Dorothy Stewart) from Dubbo have expressed an interest in the Tomingley Gold Project heritage matters. The Stewart family are direct descendants of Michael Mickey (born 1851 at Bulgandramine) and Mary Ann Peck (born 1842 in Tomingley).

A consultation meeting was held in Peak Hill on 13th October 2010, convened by Alkane, with the Peak Hill Wiradjuri Reference Group (including the Stewarts). This meeting was convened to advance some community development opportunities that would likely flow from the TGO.

Contact was again made with the Registered Stakeholders in late 2010 to invite Aboriginal community representatives to be involved in the survey (30th November 2010) of the additional land parcel along the northern boundary of the MLA Study Area.

Alkane convened a community meeting at Tomingley Memorial Hall on 31st January 2011. The purpose of this meeting was to inform the Tomingley, Peak Hill, Narromine and Parkes communities of the findings in the Project Environmental Assessment. Peak Hill and Dubbo-based Wiradjuri people attended this meeting. Attendees were encouraged to participate in follow up consultations by registering on the night.

Narromine Local Aboriginal Land Council was contacted to supply four members to work on an archaeological dig on site TNWP-OS1 with PAD over the proposed water supply pipeline route along the "Woodlands" driveway on 1st and 2nd February 2011. A local Aboriginal man, Paul Brydon also worked on this excavation programme.

Follow up consultations with the Stewart family took place in Dubbo on 18th February 2011 and in Peak Hill with Chris Peckham on 22nd February 2011, and Cherie Keed on 23rd February 2011.

In April 2011, a final draft version of the Assessment report (OzArk 2011a), or a letter of its availability, was distributed to all Registered Aboriginal Stakeholders. It was noted in the accompanying letter (presented in OzArk 2011a: Appendix 3) that comment was requested by May 2nd 2011, but that if an extension was required to facilitate comment, that could be arranged. The letter also noted that no comment or call in relation to the report was taken to mean that the stakeholder was happy with the content of the report. No response was received from any of the stakeholders in relation to the draft report provided. On the 19th of September 2011, this report was also sent out to any stakeholders that had not already received it, being those that had been sent a letter of its availability.

A copy of the draft test excavation report was distributed to both Narromine LALC and Paul Brydon on May 13th 2011, and comment was invited within a three week time frame which extended to June 3rd 2011. No response was received from either stakeholder in relation to the draft report provided. It is noteworthy that a CD copy with a final PDF version of the test excavation report was sent to all stakeholders on October 28th 2011 for their records.

Alkane arranged an Aboriginal Registered Stakeholder meeting at the Peak Hill AIF Hall on September 28th 2011 to discuss the draft CHMP (which had been distributed to all Registered Stakeholders on September 19) and to update Stakeholders on the progress of the TGO approvals process. Minutes from the meeting are presented in OzArk 2011a: Appendix 3. The dominant issue at the meeting was the significance of the project site to the local Indigenous community and the importance of the TGP-ST7, the potentially carved tree. To confirm whether TGP-ST7 is a carved tree, stakeholders determined that the best way forward would be to engage an arborist to remove the bark. Subsequently the CHMP would be guided by this analysis and written to incorporate all known project impacts.

5.1.2 Aboriginal Community Involvement for Mine Site Study Area Survey and Assessment

The following organisations / individuals were formally invited to participate in the fieldwork for the TGO Mine Site survey:

- Little Burning Mountain Aboriginal Corp (LBMAC);
- Wiradjuri Council of Elders (WCE); and
- Peak Hill Local Aboriginal Land Council (PHLALC).

Anthony Wilson, John and Ken Robinson and Shani Hando representing Little Burning Mountain participated in the survey of the Mine Site Study Area on the 5th, 6th, 7th of August 2009 and the 1st and 2nd of September 2009 with the OzArk team. Representatives from PHLALC chose not to participate in the field work. Robert Clegg representing the WCE was invited to take part in the field assessment, but declined the offer.

Additional fieldwork over Paddock 17 (see OzArk 2011a: **Figure 7**) was undertaken on 30th November 2010 with Ken Robinson and Francis Robinson of LBMAC participating.

5.1.3 Aboriginal Community Involvement for the PHTETL Study Area Survey and Assessment

The Bogan River Peak Hill Wiradjuri Aboriginal Corporation (BPHWAC) was formally invited to participate in fieldwork.

Melvin Keed and Karryn Schaefer representing BPHWAC participated in the survey of the PHTETL Study Area on the 26th of August 2009.

5.1.4 Aboriginal Community Involvement for the TNWP Study Area Survey and Assessment

The following organisations / individuals were formally invited to participate in the field work for the TGWP Study Area:

- Narromine LALC; and
- Peak Hill LALC.

Tom Peckham representing Peak Hill LALC and Paul (Midnight) Brydon representing Narromine LALC participated in the survey of the TNWP corridor on the 1st and 2nd of July 2009.

Discussions were held in the field at the location of each site between archaeologists and the Aboriginal representatives to define and develop requirements for mitigation or management measures. These helped develop the management measures documented in this report.

OzArk (2009: Appendix 2) shows correspondence with the Aboriginal communities while OzArk (2009: Appendix 3) provides a register of all consultation with Aboriginal groups.

Between the 1st and 2nd of February 2011, test excavations were undertaken at site TNWP-OS1 with PAD. Four representatives of the Narromine LALC were invited to participate in this project along with Paul (Midnight) Brydon.

5.2 OTHER COMMUNITY INVOLVEMENT

The Peak Hill Historical Society, offered to send OzArk some documents in relation to McPhail Mine, which was useful. Trevor Robinson from the NSW Heritage Office and the Australian Heritage Office was contacted in relation to an Aboriginal Place on the Australian Heritage Register that is recorded as being in Peak Hill itself. Trevor noted he was unaware of the listing and that he would ask community whether anything was known about it (Pers. Comm. Sept 10 2009), but no further information on site location could be ascertained.

5.3 ACCESS TO ABORIGINAL HERITAGE ITEMS

TGO will facilitate access to items of cultural heritage by Aboriginal stakeholders upon written request.

- Groups or individuals requesting access must identify as belonging to the local region (e.g. Tomingley, Peak Hill, Dubbo, Narromine and Bulgandramine)
- Access is to be at a time suitable to TGO and visitors will be accompanied by TGO staff at all times.
- No items of cultural heritage are to be interfered with or removed by groups or persons visiting.

5.4 ON GOING COMMUNITY INVOLVEMENT

Representatives from the Peak Hill LALC were invited to attend the TGO Community Consultative Committee as an observer to keep up to date with project activities and to allow an opportunity to bring cultural heritage issues into discussion with respect to the project.

6. ADDITIONAL INVESTIGATION REQUIRED TO DETERMINE THE MANAGEMENT OF TNWP-OS1 WITH PAD

Site TNWP-OS1 with PAD was recorded as an open site located on the “Woodlands” property. The majority of the site material was visible along western eroding margins of the river terrace landform that the pipeline will traverse from “Woodlands” to Tomingley. In an attempt to avoid the primary area of site exposure, the pipeline was moved from the west side of the access road to the east side.

It was still not certain as to whether the site had associated sub-surface deposits and consequently it was recommended that some limited test excavations be carried out to determine how the excavation for the pipeline should be managed in reference to the site.

These excavations were undertaken pursuant to section 75(U)4 of the EP&A Act and were completed over 2 days (Feb 1-2 2011) in partnership with the Narramine LALC and local Traditional Owners.

The results of the excavation programme determined that the primary site focus was the surface material on the eroding western margins of the landform and that the deposits within the proposed pipeline route demonstrated low artefact numbers, considered to be ‘background’ quantities and with no archaeological stratigraphy present.

Due to the very low numbers of artefacts from the excavated pits within the pipeline trench, and as the majority of those recorded were quartz chips, it was determined that monitoring of the pipeline trench would not be required on archaeological grounds, as it was considered unlikely that any archaeological material would be easily visible in the limited confines of the pipeline trench. The Aboriginal community did express interest in monitoring the pipeline trench through the site for the purpose of artefact retrieval and this request was granted.

This excavation programme is reported in its entirety in the OzArk report entitled: Test Excavations over site TNWP-OS1 with PAD, Tomingley Gold Project, March 2011.

7. MANAGEMENT OF THE ABORIGINAL HERITAGE ITEMS

The proposed management of identified heritage issues is presented in the following tables, each designed to focus on various aspects of site impact and management. The management for any particular site / impact location may include several actions, some of which were required pre-construction (salvage excavations, detailed recording and artefact relocation) while others are required during construction / operations (fencing of sensitive areas).

Table 1 lists all recorded Aboriginal sites, with allocated management group, and other site specific management requirements (**Table 1**).

This same information has been tabulated, according to management groups, in **Tables 2 to 4**.

In the event that the disturbance footprint changes, appropriate consultation and field survey will be undertaken to confirm no sites of heritage significance will be impacted.

Table 1 - All Aboriginal sites identified during field assessments.

Serial	Site	Location				M'ment Group	Remarks
		Datum	Zone	Easting	Northing		
1	TGP-OS1	GDA	55	613105	6396157	1	No direct impact. Fence to avoid inadvertent impact.
2	TGP-OS2	GDA	55	613056	6395630	2	Impact: road construction. Manage by covering with geofabric. See Section 3.2 for detailed management.
3	TGP-IF1	GDA	55	613197	6396077	1	No direct impact. Fence / flag to avoid inadvertent impact.
4	TGP-IF2	GDA	55	615867	6394529	1	No direct impact. Fence / flag to avoid inadvertent impact.
5	TGP-ST1	GDA	55	613071	6395945	1	No direct impact. Fence / flag to avoid inadvertent impact.
6	TGP-ST2	GDA	55	613087	6395894	1	No direct impact. Fence / flag to avoid inadvertent impact.
7	TGP-ST3	GDA	55	613368	6395798	1	No direct impact. Fence / flag to avoid inadvertent impact.
8	TGP-ST4	GDA	55	613004	6395579	1	No direct impact. Fence / flag to avoid inadvertent impact.
9	TGP-ST5	GDA	55	612901	6394846	1	No direct impact. Fence / flag to avoid inadvertent impact.
10	TGP-ST6	GDA	55	613026	6395495	1	No direct impact. Fence / flag to avoid inadvertent impact.
11	TGP-ST7	GDA	55	614364	6393524	3	To be removed in two sections with community present. Sections to be kept for community in a place of their choosing.
12	TGP-ST8	GDA	55	614553	6393485	1	No direct impact. Fence / flag to avoid inadvertent impact.
13	TGP-ST9	GDA	55	614551	6393461	1	No direct impact. Fence / flag to avoid inadvertent impact.
14	TGP-ST10	GDA	55	615687	6393944	3	Impact: waste rock emplacement. Tree is to be removed and Aboriginal community to decide storage location.
15	TGP-ST11	GDA	55	614517	6396210	1	No direct impact. Fence / flag to avoid inadvertent impact.

16	TGP-ST12	GDA	55	614515	6396204	1	No direct impact. Fence / flag to avoid inadvertent impact.
17	TGP-ST13	GDA	55	614382	6395982	1	No direct impact. Fence / flag to avoid inadvertent impact.
18	TGP-ST14	GDA	55	614427	6395965	1	No direct impact. Fence / flag to avoid inadvertent impact.
19	TGP-ST15	GDA	55	616528	6394328	1	No direct impact. Fence / flag to avoid inadvertent impact.
20	PHTETL-ST1	GDA	55	613118	6378918	1	No direct impact. Fence / flag to avoid inadvertent impact.
21	PHTETL-ST2	GDA	55	613125	6380607	1	No direct impact. Fence / flag to avoid inadvertent impact.
22	PHTETL-ST3	GDA	55	612801	6377550	1	No direct impact. Fence / flag to avoid inadvertent impact.
23	TNWP-OS1 with PAD	AGD	55	624398	6431248	2	Impact: Water pipeline route. Pipeline will be underground. Test excavation showed the site to have low archaeological potential. Current management recommendation is for trenching through the site is to be monitored by the Aboriginal community. See Section 4.3.3 for detailed management.
24	TNWP-ST1	AGD	55	614439	6396237	1	No direct impact. Fence / flag to avoid inadvertent impact.
25	TNWP-ST2	AGD	55	613903	6398250	1	No direct impact. Fence / flag to avoid inadvertent impact.
26	TNWP-ST3	AGD	55	613915	6398413	1	No direct impact. Fence / flag to avoid inadvertent impact.
27	TNWP-ST4	AGD	55	613915	6398412	1	No direct impact. Fence / flag to avoid inadvertent impact.
28	TNWP-ST5	AGD	55	614039	6399566	1	No direct impact. Fence / flag to avoid inadvertent impact.
29	TNWP-ST6	AGD	55	614230	6401347	1	No direct impact. Fence / flag to avoid inadvertent impact.
30	TNWP-ST7	AGD	55	614420	6404107	1	No direct impact. Fence / flag to avoid inadvertent impact.
31	TNWP-ST8	AGD	55	614632	6406434	1	No direct impact. Fence / flag to avoid inadvertent impact.
32	TNWP-ST9	AGD	55	614642	6406558	1	No direct impact. Fence / flag to avoid inadvertent impact.
33	TNWP-ACD1	AGD	55	614649	6406572	1	No direct impact. Fence / flag to avoid inadvertent impact.
34	TNWP-ST10	AGD	55	614673	6406648	1	No direct impact. Fence / flag to avoid inadvertent impact.
35	TNWP-ST11	AGD	55	614740	6407444	1	No direct impact. Fence / flag to avoid inadvertent impact.
36	TNWP-ST12	AGD	55	614819	6408470	1	No direct impact. Fence / flag to avoid inadvertent impact.
37	TNWP-ST13	AGD	55	615316	6413898	1	No direct impact. Fence / flag to avoid inadvertent impact.
38	TNWP-ST14	AGD	55	615525	6416359	1	No direct impact. Fence / flag to avoid inadvertent impact.
39	TNWP-ST15	AGD	55	623925	6430436	1	No direct impact. Fence / flag to avoid inadvertent impact.
40	TNWP-ST16	AGD	55	623929	6430430	1	No direct impact. Fence / flag to avoid inadvertent impact.
41	TNWP-ST17	AGD	55	622169	6428427	1	No direct impact. Fence / flag to avoid inadvertent impact.
42	TNWP-ST18	AGD	55	621985	6427312	1	No direct impact. Fence / flag to avoid inadvertent impact.

43	TNWP-ST19	AGD	55	621923	6427311	1	No direct impact. Fence / flag to avoid inadvertent impact.
44	TNWP-ST20	AGD	55	621925	6426951	1	No direct impact. Fence / flag to avoid inadvertent impact.
45	TNWP-ST21	AGD	55	621828	6426366	1	No direct impact. Fence / flag to avoid inadvertent impact.
46	TNWP-ST22	AGD	55	621747	6225838	1	No direct impact. Fence / flag to avoid inadvertent impact.
47	TNWP-ST23	AGD	55	621737	6425766	1	No direct impact. Fence / flag to avoid inadvertent impact.
48	TNWP-ST24	AGD	55	619467	6424356	1	No direct impact. Fence / flag to avoid inadvertent impact.
49	TNWP-ST25	AGD	55	619386	6424375	1	No direct impact. Fence / flag to avoid inadvertent impact.
50	TNWP-ST26	AGD	55	618563	6424489	1	No direct impact. Fence / flag to avoid inadvertent impact.
51	TNWP-ST27	GDA	55	617840	6424831	1	No direct impact. Fence / flag to avoid inadvertent impact.
52	TNWP-ST28	GDA	55	617250	6424944	1	No direct impact. Fence / flag to avoid inadvertent impact.
53	TNWP-ST29/ #36-3-0013 ?	AGD	55	616091	6422297	1	No direct impact. Fence / flag to avoid inadvertent impact.
54	TNWP-ST30	GDA	55	616375	6424080	1	No direct impact. Fence / flag to avoid inadvertent impact.
55	TNWP-ST31	AGD	55	615692	6417807	1	No direct impact. Fence / flag to avoid inadvertent impact.
56	TNWP-ST32	AGD	55	615799	6419055	1	No direct impact. Fence / flag to avoid inadvertent impact.
57	TNWP-ST33	AGD	55	615795	6418948	1	No direct impact. Fence / flag to avoid inadvertent impact.
58	TNWP-ST34	AGD	55	615792	6418921	1	No direct impact. Fence / flag to avoid inadvertent impact.
59	TNWP-ST35	AGD	55	615793	6418866	1	No direct impact. Fence / flag to avoid inadvertent impact.
59	TNWP-ST36	GDA	55	615676	6416721	1	No direct impact. Fence / flag to avoid inadvertent impact.

7.1 SITES THAT REQUIRE FENCING – MANAGEMENT GROUP 1.

In total, fifty-six locations require fencing (**Table 2**). This process will ensure that no sites of this management group are disturbed by inadvertent impacts caused by vehicles or the placement of heavy equipment.

Table 2 - Sites requiring fencing - Management Group 1.

Page 1 of 4

Site	Location	Reason for Action	Action Required	Timing
TGP-OS1	Mine Site Study Area	No direct impact. Potential for inadvertent disturbance during construction phase.	Fence / flag to avoid inadvertent impact.	Fence / flag immediately prior to construction.
TGP-IF1	Mine Site Study Area	No direct impact. Potential for inadvertent disturbance during construction phase.	Fence / flag to avoid inadvertent impact.	Fence / flag immediately prior to construction.
TGP-IF2	Mine Site Study Area	No direct impact. Potential for inadvertent disturbance during construction phase.	Fence / flag to avoid inadvertent impact.	Fence / flag immediately prior to construction.

Site	Location	Reason for Action	Action Required	Timing
TGP-ST1	Mine Site Study Area	No direct impact. Potential for inadvertent disturbance during construction phase.	Fence / flag to avoid inadvertent impact.	Fence / flag immediately prior to construction.
TGP-ST2	Mine Site Study Area	No direct impact. Potential for inadvertent disturbance during construction phase.	Fence / flag to avoid inadvertent impact.	Fence / flag immediately prior to construction.
TGP-ST3	Mine Site Study Area	No direct impact. Potential for inadvertent disturbance during construction phase.	Fence / flag to avoid inadvertent impact.	Fence / flag immediately prior to construction.
TGP-ST4	Mine Site Study Area	No direct impact. Potential for inadvertent disturbance during construction phase.	Fence / flag to avoid inadvertent impact.	Fence / flag immediately prior to construction.
TGP-ST5	Mine Site Study Area	No direct impact. Potential for inadvertent disturbance during construction phase.	Fence / flag to avoid inadvertent impact.	Fence / flag immediately prior to construction.
TGP-ST6	Mine Site Study Area	No direct impact. Potential for inadvertent disturbance during construction phase.	Fence / flag to avoid inadvertent impact.	Fence / flag immediately prior to construction.
TGP-ST8	Mine Site Study Area	No direct impact. Potential for inadvertent disturbance during construction phase.	Fence / flag to avoid inadvertent impact.	Fence / flag immediately prior to construction. Fencing to extend to the drip line of the tree
TGP-ST9	Mine Site Study Area	No direct impact. Potential for inadvertent disturbance during construction phase.	Fence / flag to avoid inadvertent impact.	Fence / flag immediately prior to construction. Fencing shall extend to the drip line of the trees.
TGP-ST11	Mine Site Study Area	No direct impact. Potential for inadvertent disturbance during construction phase.	Fence / flag to avoid inadvertent impact.	Fence / flag immediately prior to construction.
TGP-ST12	Mine Site Study Area	No direct impact. Potential for inadvertent disturbance during construction phase.	Fence / flag to avoid inadvertent impact.	Fence / flag immediately prior to construction.
TGP-ST13	Mine Site Study Area	No direct impact. Potential for inadvertent disturbance during construction phase.	Fence / flag to avoid inadvertent impact.	Fence / flag immediately prior to construction.
TGP-ST14	Mine Site Study Area	No direct impact. Potential for inadvertent disturbance during construction phase.	Fence / flag to avoid inadvertent impact.	Fence / flag immediately prior to construction.
TGP- ST15	Mine Site Study Area	No direct impact. Potential for inadvertent disturbance during construction phase.	Fence / flag to avoid inadvertent impact.	Fence / flag immediately prior to construction.
PHTETL-ST1	Peak Hill to Tomingley ETL Study Area	No direct impact. Potential for inadvertent disturbance during construction phase.	Fence / flag to avoid inadvertent impact.	Fence / flag immediately prior to construction.
PHTETL-ST2	Peak Hill to Tomingley ETL Study Area	No direct impact. Potential for inadvertent disturbance during construction phase.	Fence / flag to avoid inadvertent impact.	Fence / flag immediately prior to construction.

Site	Location	Reason for Action	Action Required	Timing
PHTETL-ST3	Peak Hill to Tomingley ETL Study Area	No direct impact. Potential for inadvertent disturbance during construction phase.	Fence / flag to avoid inadvertent impact.	Fence / flag immediately prior to construction.
TNWP-ST1	Tomingley to Narromine Water Pipeline Study Area	No direct impact. Potential for inadvertent disturbance during construction phase.	Fence / flag to avoid inadvertent impact.	Fence / flag immediately prior to construction.
TNWP-ST2	Tomingley to Narromine Water Pipeline Study Area	No direct impact. Potential for inadvertent disturbance during construction phase.	Fence / flag to avoid inadvertent impact.	Fence / flag immediately prior to construction.
TNWP-ST3	Tomingley to Narromine Water Pipeline Study Area	No direct impact. Potential for inadvertent disturbance during construction phase.	Fence / flag to avoid inadvertent impact.	Fence / flag immediately prior to construction.
TNWP-ST4	Tomingley to Narromine Water Pipeline Study Area	No direct impact. Potential for inadvertent disturbance during construction phase.	Fence / flag to avoid inadvertent impact.	Fence / flag immediately prior to construction.
TNWP-ST5	Tomingley to Narromine Water Pipeline Study Area	No direct impact. Potential for inadvertent disturbance during construction phase.	Fence / flag to avoid inadvertent impact.	Fence / flag immediately prior to construction.
TNWP-ST6	Tomingley to Narromine Water Pipeline Study Area	No direct impact. Potential for inadvertent disturbance during construction phase.	Fence / flag to avoid inadvertent impact.	Fence / flag immediately prior to construction.
TNWP-ST7	Tomingley to Narromine Water Pipeline Study Area	No direct impact. Potential for inadvertent disturbance during construction phase.	Fence / flag to avoid inadvertent impact.	Fence / flag immediately prior to construction.
TNWP-ST8	Tomingley to Narromine Water Pipeline Study Area	No direct impact. Potential for inadvertent disturbance during construction phase.	Fence / flag to avoid inadvertent impact.	Fence / flag immediately prior to construction.
TNWP-ST9	Tomingley to Narromine Water Pipeline Study Area	No direct impact. Potential for inadvertent disturbance during construction phase.	Fence / flag to avoid inadvertent impact.	Fence / flag immediately prior to construction.
TNWP-ACD1	Tomingley to Narromine Water Pipeline Study Area	No direct impact. Potential for inadvertent disturbance during construction phase.	Fence / flag to avoid inadvertent impact.	Fence / flag immediately prior to construction.
TNWP-ST10	Tomingley to Narromine Water Pipeline Study Area	No direct impact. Potential for inadvertent disturbance during construction phase.	Fence / flag to avoid inadvertent impact.	Fence / flag immediately prior to construction.
TNWP-ST11	Tomingley to Narromine Water Pipeline Study Area	No direct impact. Potential for inadvertent disturbance during construction phase.	Fence / flag to avoid inadvertent impact.	Fence / flag immediately prior to construction.
TNWP-ST12	Tomingley to Narromine Water Pipeline Study Area	No direct impact. Potential for inadvertent disturbance during construction phase.	Fence / flag to avoid inadvertent impact.	Fence / flag immediately prior to construction.
TNWP-ST13	Tomingley to Narromine Water Pipeline Study Area	No direct impact. Potential for inadvertent disturbance during construction phase.	Fence / flag to avoid inadvertent impact.	Fence / flag immediately prior to construction.
TNWP-ST14	Tomingley to Narromine Water Pipeline Study Area	No direct impact. Potential for inadvertent	Fence / flag to avoid inadvertent impact.	Fence / flag immediately prior to construction.

Site	Location	Reason for Action	Action Required	Timing
		disturbance during construction phase.		
TNWP-ST15	Tomingley to Narromine Water Pipeline Study Area	No direct impact. Potential for inadvertent disturbance during construction phase.	Fence / flag to avoid inadvertent impact.	Fence / flag immediately prior to construction.
TNWP-ST16	Tomingley to Narromine Water Pipeline Study Area	No direct impact. Potential for inadvertent disturbance during construction phase.	Fence / flag to avoid inadvertent impact.	Fence / flag immediately prior to construction.
TNWP-ST17	Tomingley to Narromine Water Pipeline Study Area	No direct impact. Potential for inadvertent disturbance during construction phase.	Fence / flag to avoid inadvertent impact.	Fence / flag immediately prior to construction.
TNWP-ST18	Tomingley to Narromine Water Pipeline Study Area	No direct impact. Potential for inadvertent disturbance during construction phase.	Fence / flag to avoid inadvertent impact.	Fence / flag immediately prior to construction.
TNWP-ST19	Tomingley to Narromine Water Pipeline Study Area	No direct impact. Potential for inadvertent disturbance during construction phase.	Fence / flag to avoid inadvertent impact.	Fence / flag immediately prior to construction.
TNWP-ST20	Tomingley to Narromine Water Pipeline Study Area	No direct impact. Potential for inadvertent disturbance during construction phase.	Fence / flag to avoid inadvertent impact.	Fence / flag immediately prior to construction.
TNWP-ST21	Tomingley to Narromine Water Pipeline Study Area	No direct impact. Potential for inadvertent disturbance during construction phase.	Fence / flag to avoid inadvertent impact.	Fence / flag immediately prior to construction.
TNWP-ST22	Tomingley to Narromine Water Pipeline Study Area	No direct impact. Potential for inadvertent disturbance during construction phase.	Fence / flag to avoid inadvertent impact.	Fence / flag immediately prior to construction.
TNWP-ST23	Tomingley to Narromine Water Pipeline Study Area	No direct impact. Potential for inadvertent disturbance during construction phase.	Fence / flag to avoid inadvertent impact.	Fence / flag immediately prior to construction.
TNWP-ST24	Tomingley to Narromine Water Pipeline Study Area	No direct impact. Potential for inadvertent disturbance during construction phase.	Fence / flag to avoid inadvertent impact.	Fence / flag immediately prior to construction.
TNWP-ST25	Tomingley to Narromine Water Pipeline Study Area	No direct impact. Potential for inadvertent disturbance during construction phase.	Fence / flag to avoid inadvertent impact.	Fence / flag immediately prior to construction.
TNWP-ST26	Tomingley to Narromine Water Pipeline Study Area	No direct impact. Potential for inadvertent disturbance during construction phase.	Fence / flag to avoid inadvertent impact.	Fence / flag immediately prior to construction.
TNWP-ST27	Tomingley to Narromine Water Pipeline Study Area	No direct impact. Potential for inadvertent disturbance during construction phase.	Fence / flag to avoid inadvertent impact.	Fence / flag immediately prior to construction.
TNWP-ST28	Tomingley to Narromine Water Pipeline Study Area	No direct impact. Potential for inadvertent disturbance during construction phase.	Fence / flag to avoid inadvertent impact.	Fence / flag immediately prior to construction.
TNWP-ST29/ #36-3-0013 ?	Tomingley to Narromine Water Pipeline Study Area	No direct impact. Potential for inadvertent disturbance during construction phase.	Fence / flag to avoid inadvertent impact.	Fence / flag immediately prior to construction.

Site	Location	Reason for Action	Action Required	Timing
TNWP-ST30	Tomingley to Narromine Water Pipeline Study Area	No direct impact. Potential for inadvertent disturbance during construction phase.	Fence / flag to avoid inadvertent impact.	Fence / flag immediately prior to construction.
TNWP-ST31	Tomingley to Narromine Water Pipeline Study Area	No direct impact. Potential for inadvertent disturbance during construction phase.	Fence / flag to avoid inadvertent impact.	Fence / flag immediately prior to construction.
TNWP-ST32	Tomingley to Narromine Water Pipeline Study Area	No direct impact. Potential for inadvertent disturbance during construction phase.	Fence / flag to avoid inadvertent impact.	Fence / flag immediately prior to construction.
TNWP-ST33	Tomingley to Narromine Water Pipeline Study Area	No direct impact. Potential for inadvertent disturbance during construction phase.	Fence / flag to avoid inadvertent impact.	Fence / flag immediately prior to construction.
TNWP-ST34	Tomingley to Narromine Water Pipeline Study Area	No direct impact. Potential for inadvertent disturbance during construction phase.	Fence / flag to avoid inadvertent impact.	Fence / flag immediately prior to construction.
TNWP-ST35	Tomingley to Narromine Water Pipeline Study Area	No direct impact. Potential for inadvertent disturbance during construction phase.	Fence / flag to avoid inadvertent impact.	Fence / flag immediately prior to construction.
TNWP-ST36	Tomingley to Narromine Water Pipeline Study Area	No direct impact. Potential for inadvertent disturbance during construction phase.	Fence / flag to avoid inadvertent impact.	Fence / flag immediately prior to construction.

7.2 SITE REQUIRING COVERING – MANAGEMENT GROUP 2.

One location (TGP-OS2 – see **Table 3**) required covering with protective materials to ensure the site is not disturbed by inadvertent impacts caused by vehicles or the placement of heavy equipment. The site has been covered with geofabric and gravel / soil, protecting in situ artefacts and deposits from inadvertent impact.

This covering method minimises disturbance in the form of collection / relocation or destruction in the form of test / salvage excavation. As discussed with the local Aboriginal community groups, there is a preference for protecting artefacts in situ, rather than collecting and removing them from their context. The geofabric will remain in place where ongoing vehicle movement is likely for maintenance or operational purposes.

Table 3 -Site requiring covering - Management Group 2.

Site	Image	Location	Reason for Action	Action
TGP-OS2		Mine Site	Main access road.	Place Geofabric followed by sand or gravel directly on the ground within the disturbance footprint of the main site access road. Hand planting of native trees and shrubs adjacent to the Main Site Access Road in the vicinity of TGP-OS2. This will prevent vehicular access to other sections of the site.

7.3 SITE IMPACTS – MANAGEMENT GROUP 3.

Site impacts are proposed at three locations within the TGO impact footprint (**Table 4**). Two of these sites, TGP-ST7 and TGP-ST10 are modified trees, which have been removed to an approved temporary keeping place. The third site is TNWP-OS1 with PAD. This site has already undergone test excavation and determined that impacts of the excavation trench through the site will be minimal.

7.3.1 Site TGP-ST7 and TGP-ST10

Site TGP-ST7 was located within the footprint of the Wyoming One open cut. Further investigation was undertaken to scientifically authenticate the markings on the tree, and assist in the development of appropriate management measures. An expert arborist was engaged to undertake scientific tree ageing, which indicated the tree is likely to be 269 years old, and that the scar is unlikely to have been cultural in origin. Regardless of these indications, the tree was managed a significant heritage site. The tree trunk was removed carefully, using a chainsaw below the base of the carving, and transported to an appropriate keeping place.

Site TGP-ST10 is a possible scarred tree, which was located within the footprint of Waste Rock Emplacement 3. As impact to TGP-ST10 could not be avoided, the removal of this tree was discussed with members of the Aboriginal community, and removed to a keeping place.

The approved temporary keeping place, to which the two trees were relocated, is a weather protected caged compound, located in a prominent position adjacent to the main site entrance road. The compound allows observation and study of the trees, whilst preventing damage or interference.

7.3.2 Site TNWP-OS1 with PAD

This site was subject to further investigation, including test excavation, which determined that works associated with water pipeline construction would have minimal impact on sub-surface deposits. However, potential for further Aboriginal artefacts was also identified, and management recommendations were made, which were observed during construction of the pipeline.

7.3.3 General Management Measures / Unidentified Finds Protocol




Prior to disturbance of a new area, a site “Clearing Permit” will be required. In preparing this permit, the permitting staff member will check the location of known heritage sites, to ensure no site disturbance is possible.

Should any previously unidentified Aboriginal object or site be revealed during mining operations, then work in the area should cease and the local vicinity of the find should be isolated until confirmed by a qualified archaeologist. If the object or site is Aboriginal in origin, an OEH representative and the Aboriginal community stakeholders should be contacted to discuss how best to proceed.

Should suspected ancestral human remains be encountered, the following process should be adhered to:

- Do not further disturb or move the remains;
- Immediately cease work in the vicinity and isolate the area;
- General Manager or Environment and Community Manager will notify the NSW Police;
- Notify the OEH’s Environment Line on 131555 as soon as practicable and provide available details of the remains and their location;
- Do not recommence work in the area unless authorised in writing by OEH.

Table 4 - Impacted Sites. Management group 3.

Site	Images	Location	Methodology
TGP-ST7		Mine Site	Tree removal
TGP-ST10		Mine Site	Tree removal
TNWP-OS1 with PAD		TNWP	Test excavation. Minimise disturbance and staff heritage management awareness training. Monitoring of water pipeline trenching by a representative of the Aboriginal community.

8. MANAGEMENT OF NON-ABORIGINAL HERITAGE ITEMS

As most of the recorded non-Aboriginal heritage features, as presented in **Table 5**, are outside the mine impact footprint, they are unlikely to be affected by TGO.

The inclusion of heritage awareness in the TGO Site Induction is considered the main strategy for managing the historic heritage, to ensure TGO staff and contractors are aware of the legislative protection of these sites.

Where the likelihood of inadvertent impact is identified, protective fencing and / or signage may be installed.

If the disturbance footprint changes, appropriate consultation and field survey will be undertaken to confirm no sites of heritage significance will be impacted.

Table 5 - Summary of likely impacts to recorded Non-Aboriginal sites.

Site	Location (GDA)			Possible Impacts	Management Remarks
	Zone	Easting	Northing		
TGP-HS1	55	614541	6393770	No impact.	Ensure no inadvertent impacts. Install flagging and signage.
TGP-HS2	55	614532	6393779	No impact.	Ensure no inadvertent impacts. Install flagging and signage.
TGP-HS3	55	612771	6394160	No impact.	Ensure no inadvertent impacts. Install flagging and signage.
TGP-HS4	55	614354	6393524	Wyoming One Open Cut area.	Already collected for safekeeping and will be displayed in TGO office. Currently stored at the OzArk offices.
TGP-HS5	55	615629	6394239	Waste Rock Emplacement 3 Area.	Has been recorded. No further assessment required as this area has been photographed.
TGP-HS6	55	615676	6394306	Waste Rock Emplacement 3 Area.	This site has been test excavated and it has been concluded that it has little to no heritage significance. No further assessment or recording is warranted.
TNWP-HS1	55	622900	6430330	No impact.	Not affected by pipeline construction.
TNWP-HS2	55	615334	6413935	No impact.	Not affected by pipeline construction.

9. OBJECTIVES AND TARGETS

Table 6 presents the objectives and targets with respect to Cultural Heritage Management on the TGO.

Table 6 - Objectives and Targets

Objectives	Target
Protection of known Aboriginal and Non-Aboriginal sites that have been identified.	Zero harm to these sites
Preservation of Cultural Artefacts that have been identified as requiring removal.	All artefacts identified are removed to appropriate keeping place

10. MONITORING

Pre-clearing and post clearing surveys will be undertaken to ensure protective measures delineating a heritage site are intact and that the items are easily identifiable.

Inspection of protective measures delineating a heritage site in areas of ongoing operations, will be incorporated into the scheduled environmental site inspections.

11. CORRECTIVE ACTION AND PREVENTATIVE ACTION

Any protective measures found to be damaged, removed or unclear during the inspection will be raised as a corrective action, and re-inspected during subsequent site inspections.

12. INCIDENTS

Should any damage or destruction occur to a known heritage item, work in the area will cease immediately (if works is ongoing in the area) and all remnants left in place. The Environment and Community Manager, and the TGO Operations Manager will be informed immediately.

The Operations Manager or the Environment and Community Manager will notify the NSW Office of Environment and Heritage and the NSW Department of Planning and Environment as soon as practicable after becoming aware of the incident.

A TGO Incident Report will be completed as part of the Incident Investigation and within seven days where practicable (or as directed by regulators), TGO shall provide NSW Office of Environment and Heritage, relevant Local Aboriginal Land Council and NSW Department of Planning and Environment with a details report on the incident.

13. AUDITING

This plan will be audited in accordance with the internal auditing processes incorporated into the TGO Environmental Management Strategy.

14. REVIEW

This plan will be reviewed annually or, as required, following operational or regulatory modification.

15. ROLES AND RESPONSIBILITY

Table 7 outlines the roles and responsibilities of TGO personnel with respect to cultural heritage management.

Table 7 - Roles and Responsibilities

Role	Responsibilities
TGO Operations Manager	Ensure adequate resources are available to enable implementation of the plan. Accountable for the overall operational performance of the project, including the outcomes of this plan.
Environment and Community Manager	Ensure and facilitate the implementation of this plan, including isolation of identified sites, site inspection, and training and education of TGO personnel and contractors on their cultural heritage obligations. Report incidents to external stakeholders and regulators. Evaluate the performance of the project with respect to the objectives and targets set out in this plan.
All Personnel	Duty of care to protect known cultural heritage items and to be vigilant for unknown items during ground disturbance. Follow all procedures and instructions. Duty to notify in the event of any harm or potential to harm heritage items.

16. COMPETENCE TRAINING AND AWARENESS

All personnel working on TGO will undergo a project induction. This induction includes information on the known heritage items on site, what to do if unknown items are discovered and individuals' duty to protect these items. The induction information also includes a map of known heritage items. After completing the induction, workers will sign a statement of attendance and records of this will be kept in the site office.

Where site operations are conducted in the vicinity of a known heritage item, a toolbox talk will be presented to the relevant workers to inform of item location and delineation (i.e. flagging or signage) and the measures that will be undertaken to safeguard the items.

17. REFERENCES

- | | |
|------------------------|--|
| Australian ICOMOS 1998 | Australian ICOMOS Inc. 1998. Understanding the Burra Charter: A guide to the principles of heritage conservation in Australia. Brochure produced for Australia ICOMOS. |
| Heritage Office 2009 | NSW Heritage Office 2009. Assessing Significance for Archaeological Sites and 'Relics'. Heritage Branch, Department of Planning. |
| OzArk 2009 | OzArk Environmental and Heritage Management P/L 2009. Tomingley Gold Project: Aboriginal Heritage Assessment. Report for R.W. Corkery & Co. Pty Limited on behalf of Alkane Resources Ltd. |

Appendix 1

Figures showing impacts and recorded heritage sites.

Figure 2 - Mine Site Study Area with recorded heritage sites (Base map source: Alkane)

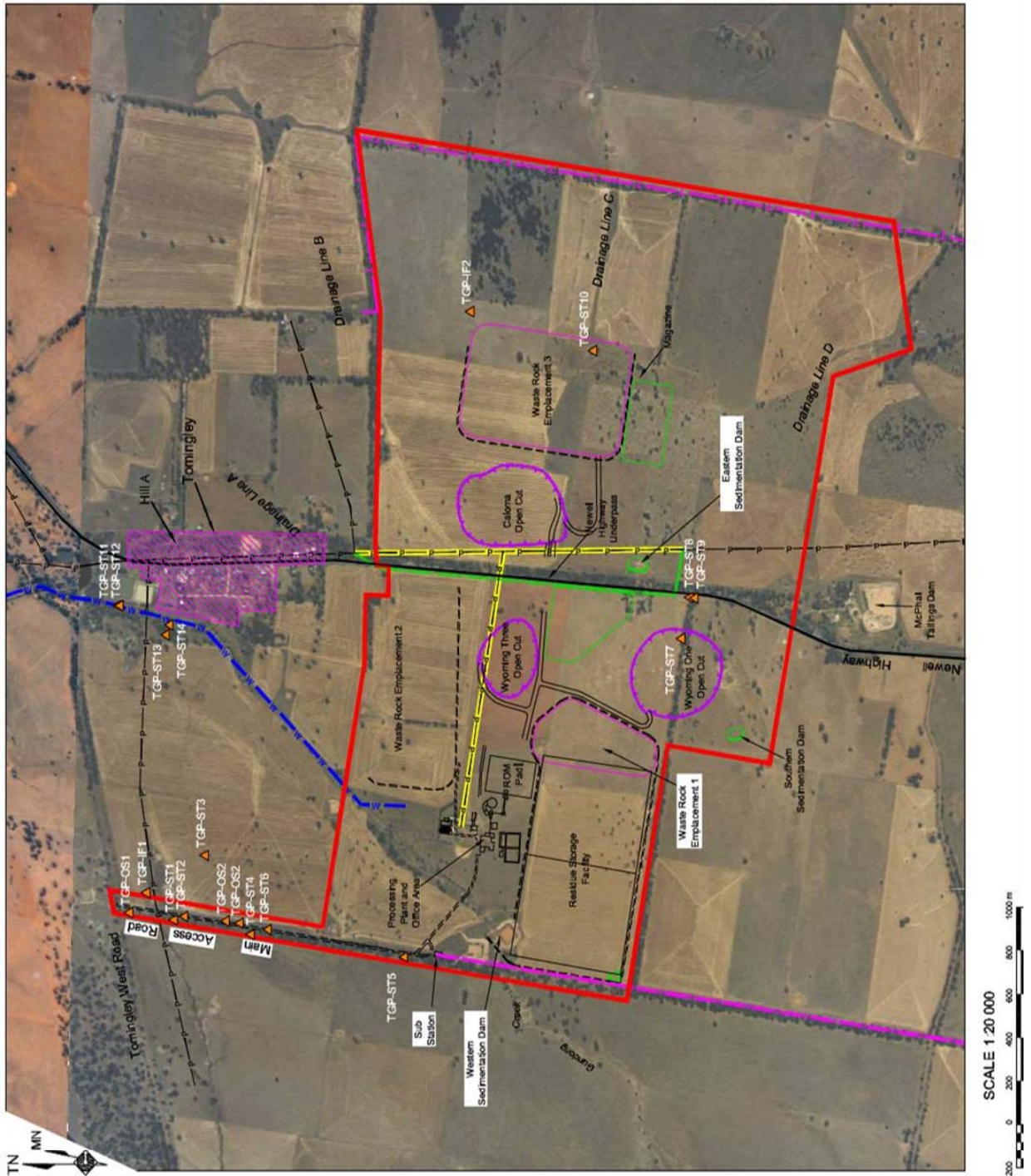
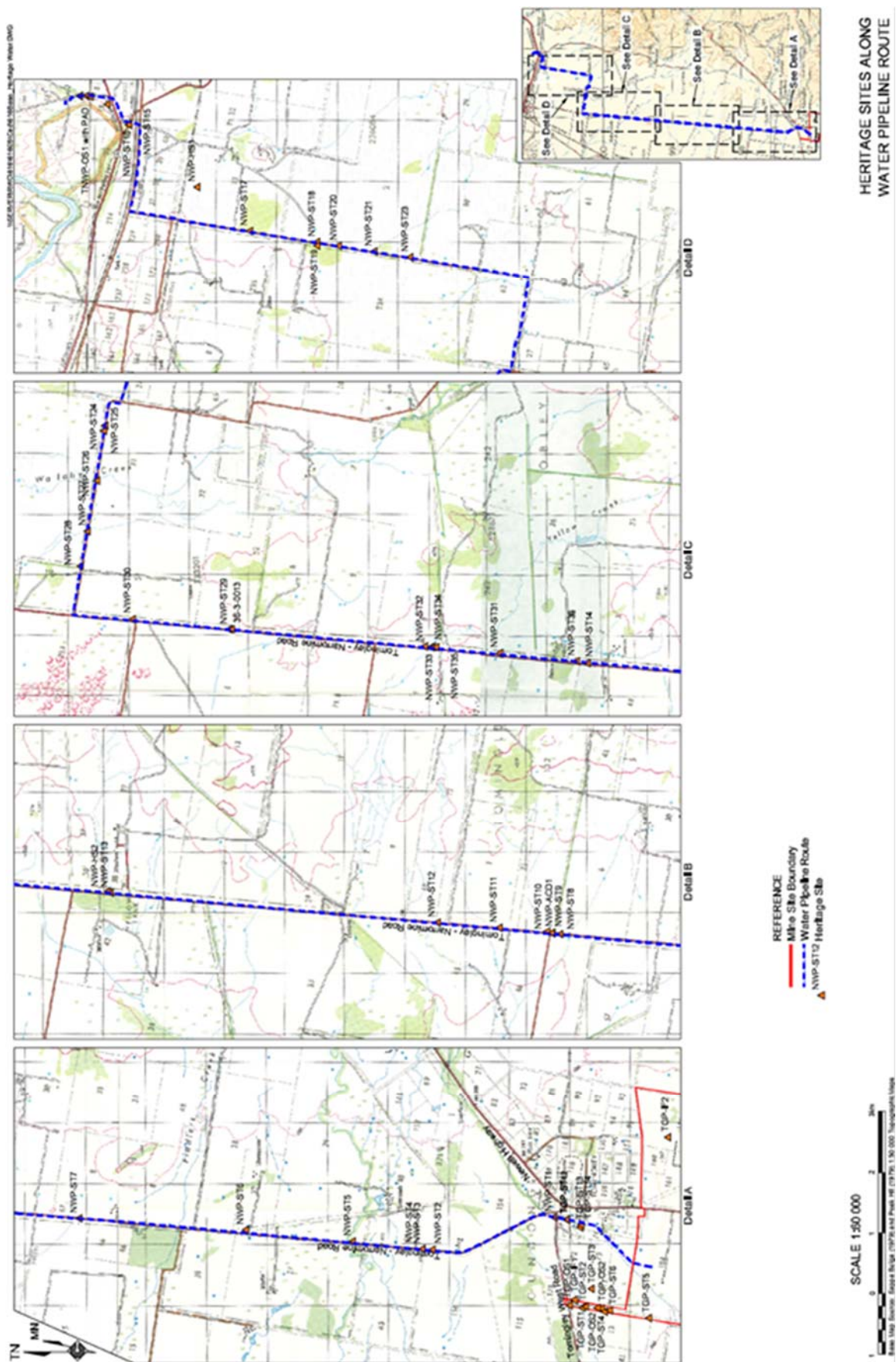


Figure 3 – TNWP Study Area with recorded heritage sites (Source: Alkane)



Appendix 2

Consultation with NSW OEHS and Endorsement by the Director General.

From: [Robert Taylor](#)
To: [Colleen Measday](#)
Subject: RE: Tomingley Gold Project - Heritage Management Plan
Date: Thursday, 12 July 2012 3:28:22 PM
Attachments: [ACHMP guidelines v7.doc](#)
[ATT00001.txt](#)

Colleen

Please find attached our guidelines for preparation for the ACH management plan
Rob

From: Colleen Measday [mailto:CMeasday@alkane.com.au]
Sent: Thursday, 12 July 2012 3:10 PM
To: Taylor Robert
Subject: Tomingley Gold Project - Heritage Management Plan

Dear Robert,

In accordance with Schedule 3, Condition 38 of Tomingley Gold Project's Project Approval we must prepare a Heritage Management Plan for the Project.

This plan must be prepared in consultation with OEH.

As discussed today your preferred approach for consultation is to provide us with a set of Guidelines with which we can use to guide preparation of our Management Plan.

Following preparation of this plan, you do not wish to comment on the final plan, instead we should submit it directly to the Director General of the NSW Department of Planning and Infrastructure for Approval.

Best Regards

Colleen Measday
Environment Superintendent

T: +61 2 6882 2866
F: +61 2 6882 9282
M: +61 458 888 798
W: www.alkane.com.au
E: cmeasday@alkane.com.au



Level 2, 21 Church Street, Dubbo NSW 2830
PO BOX 910 Dubbo NSW 2830

This email and its attachments are confidential to the named addressee and may contain legally privileged information. If you have received this email in error please let us know and immediately delete it from your system.

From: [David Kitto](#)
To: [Colleen Measday](#)
Cc: [Kane Winwood](#)
Subject: Re: Director General Endorsement - Tomingley Gold Project
Date: Monday, 6 August 2012 3:16:24 PM

Dear Colleen

I would like to advise you that the Director-General has approved the appointment of:

James Barrow to prepare the Groundwater Management Plan, which will form part of the broader Surface Water Management Plan for the project; and
Jodie Benton to prepare the Heritage Management Plan for the project.

Regards
David

Hello David,

Tomingley Gold Operations seek the endorsement of the Director General for the appointment of the specialists identified in the Letters attached. The specialists will undertake preparation of the management plans associated with Tomingley Gold Project and in accordance with Project Approval (application number 09_0155).

Best Regards

Colleen Measday
Environment Superintendent

T: +61 2 6882 2866
F +61 2 6882 9282
M: +61 458 888 798
W: www.alkane.com.au
E: cmeasday@alkane.com.au

Level 2, 21 Church Street, Dubbo NSW 2830
PO BOX 910 Dubbo NSW 2830

This email and its attachments are confidential to the named addressee and may contain legally privileged information. If you have received this email in error please let us know and immediately delete it from your system.

This message is intended for the addressee named and may contain confidential/privileged information. If you are not the intended recipient, please delete it and notify the sender. Views expressed in this message are those of the individual sender, and are not necessarily the views of the Department.
You should scan any attached files for viruses.

Appendix 3

Consultation with Aboriginal Stakeholders



Dubbo Office: Second Floor 21 Church Street (PO Box 910) Dubbo NSW 2800 Telephone: 61 2 6882 2866 Facsimile: 61 2 6882 9262
Email: msutherland@alkane.com.au

Community Engagement Protocol



and

Peak Hill Wiradjuri

Peak Hill Local Aboriginal Land Council, Little Burning Mountain Aboriginal Corporation, Bogan River Peak Hill Wiradjuri Aboriginal Corporation, Bulgandramine Youth Development Aboriginal Corporation, Warramunga Community Advancement Co-operative Society Ltd and Peak Hill Aboriginal Medical Service Inc.

15th June 2010

Registered Office: 129 Edward Street Perth WA 6000 Telephone: 61 8 9227 5677 Facsimile: 61 8 9227 8178
PO Box 8178 Perth Business Centre Western Australia 6849
www.alkane.com.au mail@alkane.com.au

Introduction

Alkane Resources Ltd (Alkane) is a publicly listed (since 1969) mining and exploration company based in Perth but with the focus of its activities in the Central West of New South Wales.

Alkane acknowledges the Upper Bogan River mob, members of the Wiradjuri Nation, as the traditional custodians, past and present, of the land around Peak Hill and Tomingley.

Alkane recognises that the local Wiradjuri community can delegate who speaks for 'country' on Aboriginal cultural heritage matters.

The Tomingley Gold Project (TGP) is located about half way between the large regional centres of Dubbo and Parkes on the Newell Highway in the Central West of New South Wales, 16km north of the town of Peak Hill.

The TGP is currently based upon three open pitable deposits Caloma, Wyoming One and Wyoming Three located in close proximity to each other and the planned carbon in leach (CIL) treatment plant. The mine and processing plant will operate 365 days per year and 24 hours per day using two 12 hour shifts. The plant will process 1Mtpa of gold ore to produce 50,000 to 60,000 oz gold annually.

No camp facilities are required and most of the project workforce can be sourced locally, living in their own accommodation. Power to the site will come from the NSW state grid via a power line from Peak Hill. Water supply will be achieved via a pipeline to be laid from established groundwater sources near Narromine, 45 kilometres to the north.

The TGP will likely require a construction workforce of 100 people for twelve months and approximately 65 permanent employees spread between Alkane and its mining contractor over the 7-8 year mine life.

If the project economics are favourable, mine life could be extended through the addition of satellite ore bodies and/or underground mining.

Mining Company Objectives

The Tomingley Gold Project is currently Alkane's most advanced of three significant projects in the Central West. However, Alkane continues to commit resources to the Dubbo Zirconia Project (23km south of Dubbo) and its other exploration tenements.

Alkane is committed to sustainable development. The Tomingley gold resource will be extracted in a safe and efficient manner while minimising all environmental impacts of the development.

Benefits from this project will flow to the local economy, shareholders, employees and State and Federal Government. Alkane will provide infrastructure associated with the TGP that will benefit the whole community into the future.

Aboriginal people's aspirations

- To participate and contribute to the local community socially, culturally and economically.
- To be trained and ready to take advantage of employment opportunities.
- To participate in the identification and preservation of local Aboriginal culture.
- That all employees and contractors working on the mine site are provided training in cultural awareness.

Principles for negotiations

- Negotiations to be founded on mutual respect between Alkane and the local community
- Negotiations to be inclusive, open and transparent
- Good communications between parties will facilitate constructive negotiations
- The Tomingley Gold Project will take several years to repay capital costs and generate profits

Co-operative working arrangement

The Peak Hill Gold Mine (1996-2002) was a demonstration that Alkane is an equal opportunity employer which employed at least 80% of the workforce 'locally' (ie living in the district before the mine started in 1996).

Alkane is committed to an ongoing co-operative working relationship with indigenous stakeholders.

Issues for negotiation

- Protection of cultural heritage sites (contents of Aboriginal Heritage Management Plan)
- Establishment of a keeping place
- Facilitation by Alkane of training for mine and tourism related jobs
- Ongoing development joint venture projects between Alkane Resources and the local community

Community Comment

The community has had input into the wording of this protocol

Signing of Protocol

David (Ian) Chalmers
Managing Director
Alkane Resources Ltd


15th June 2010.

For and on behalf of :


Peak Hill Local Aboriginal Land Council

Little Burning Mountain Aboriginal Corporation





Bogan River Peak Hill Wiradjuri Aboriginal Corporation *Russell Read*

Bulgandramine Youth Development Aboriginal Corporation *Jon L.*

WARRAMUNGA
Community Advancement Co-operative Society Ltd *H. K.*

PEAK HILL ABORIGINAL MEDICAL SERVICE INC. *John*